

Carpets Inter®



**EcoSoft x<sup>®</sup>**

Recycled Cushion Backing

**EcoSoft x<sup>®</sup> marks a new era in the development of high-performance and environmentally friendly carpet tile cushion backing.**

Natural spring water may be good for your health, but the bottles themselves threaten our environment by swallowing landfill space and increasing air-pollution from incineration. Uncontrollable volumes of plastic waste continue to flow into our oceans every second! EcoSoft x<sup>®</sup>, our established high performance carpet cushion backing, is made from 80% post-consumer material reengineered from discarded drinking water bottles plus 5% post-industrial recycled PET. So you can breathe and walk with ease.

**Continuing to toss them out, we'll run out of places to put them in.**

A fishing rod with a hook is shown against a background of blue ocean water. The hook is holding a clear plastic bottle that has been crushed and is covered in dirt and debris, illustrating the concept of plastic pollution.

If we keep using  
**plastic bottles**  
at this rate,

our oceans will have  
**more plastic  
than fish**  
in 30 years.



**BILLION**



**Recycled Water  
Bottles campaign  
has reached its goal!**

Not stop doing! This is a major milestone in our journey towards a more sustainable future, and we couldn't have done it without you. Thank you for joining us in making a difference!

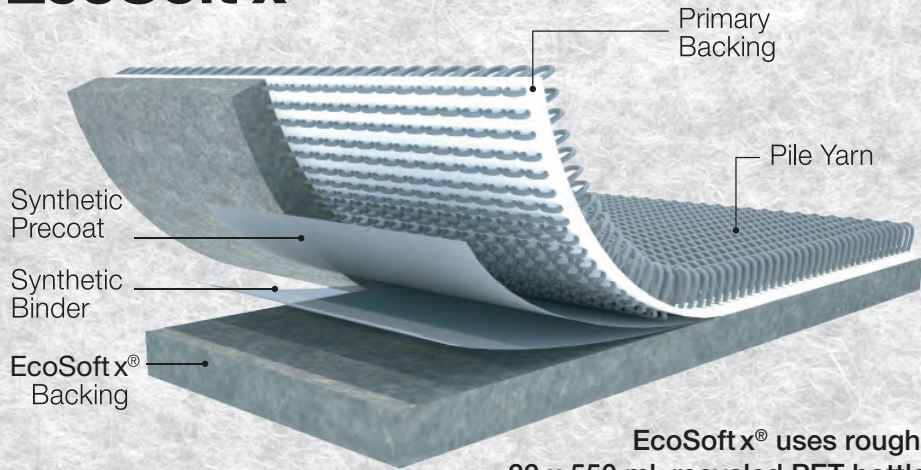
Zero mission in 2050.

---

# BREATHABLE MODULAR CARPET CONSTRUCTION

---

## EcoSoft x<sup>®</sup>



EcoSoft x<sup>®</sup> uses roughly  
22 x 550 ml. recycled PET bottles  
for every square meter of product.



ENVIRONMENTALLY RECYCLABLE MATERIALS

SOFT TO THE STEP

100%



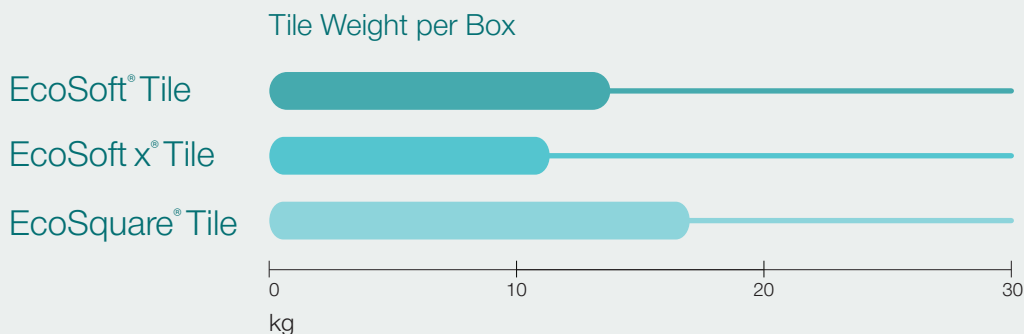
SOFT ON THE ENVIRONMENT



## Lightweight Benefit

The lighter weight of EcoSoft x<sup>®</sup> backed tiles offers significant OH&S advantages. A box of the heavier EcoSoft x<sup>®</sup> tiles is 7kg lighter than the EcoSquare<sup>®</sup> tiles equivalent (13kg vs 20kg). This reduced weight makes the tiles easier and safer to handle, reducing the physical strain (bending, kneeling) for installers and making distribution and installation quicker.

For every 100m<sup>2</sup> laid you move 260 kg of EcoSoft x<sup>®</sup> tiles, if this were PVC backed tiles you would have to move 400 kg. So there is a distinct OH&S advantage in specifying EcoSoft x<sup>®</sup> backed carpet tiles.



## Drastic Reduction in Transport Emissions

Weight and volume are the two primary drivers of fuel consumption in global logistics. EcoSoft x tackles both:

- **Lower Fuel Consumption:** Because EcoSoft x is lighter, the energy required for inland trucking and maritime shipping is reduced. This translates to lower liters of fuel burned per kilometer.
- **Fewer "Carbon Miles":** By increasing loading capacity, we effectively reduce the total number of trips required to transport the same volume of product. Fewer trucks on the road and fewer containers on the sea lead to a measurable decrease in your project's Scope 3 carbon emissions.
- **Greener Last-Mile Delivery:** In urban construction environments, the lighter weight allows for easier handling on-site and more efficient delivery via smaller, often more eco-friendly local transport vehicles.



**Heard Backed**  
More Trucks.  
More CO<sub>2</sub>

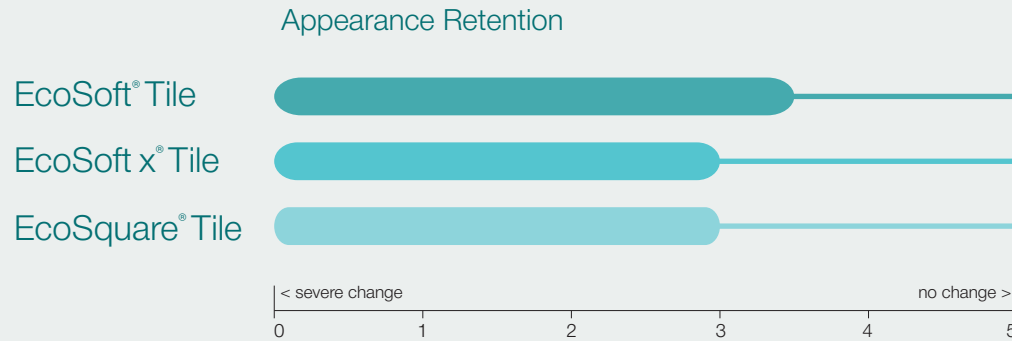


**EcoSoftx**  
Fewer Trucks.  
Lower Carbon Footprint.



## Performance Enhancement

EcoSoft x<sup>®</sup> is a designed and engineered to absorb destructive impact from high foot traffic. Its superior compression and recovery properties significantly reduce fiber crush and wear-and-tear, giving the carpet a better appearance retention compared with any hard backing, so enabling the carpet to retain its good looks for longer.



## Luxurious Walking Comfort

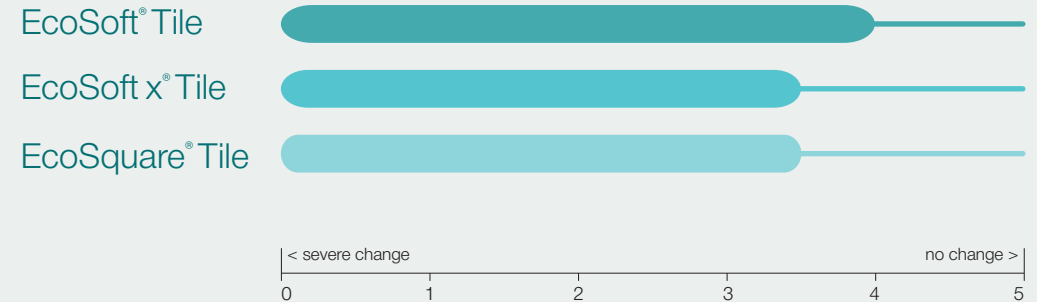
EcoSoft x<sup>®</sup> is a cushion backing that effectively absorbs foot impact, and as a result reduces leg muscle fatigue to a greater degree as compared to any hard flooring. Comfort under foot translates to higher overall productivity in the workplace.



## Exceptionally Durable

Due to its dense PET fiber construction, the cushioning effect will continue to perform for the lifespan of the installed carpet.

Caster Chair Test (Wear behavior to withstand Pile Crushing)

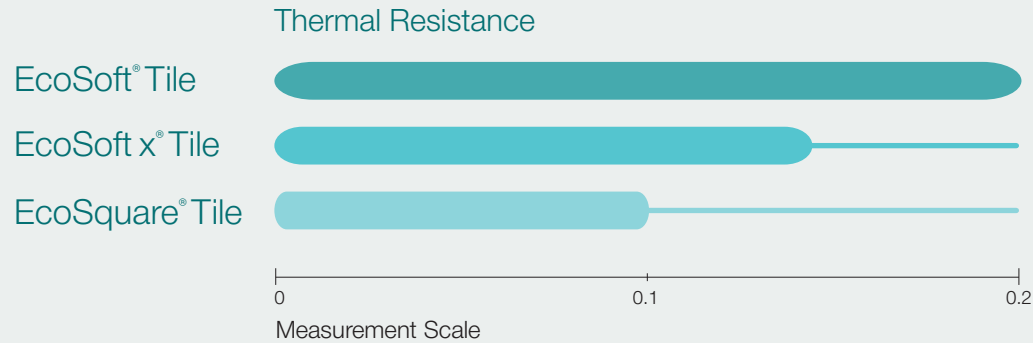




## Thermal Insulation

Heating and cooling commercial buildings is expensive. Products that contribute thermal resistance can considerably reduce energy costs. EcoSoft x<sup>®</sup> will keep the warmth in heated buildings in winter, and the cool air-conditioned air inside buildings in summer.

Tests show that EcoSoft x<sup>®</sup> outperforms hard back tile by more than 150% for thermal effectiveness.



## Superior Dimensional Stability

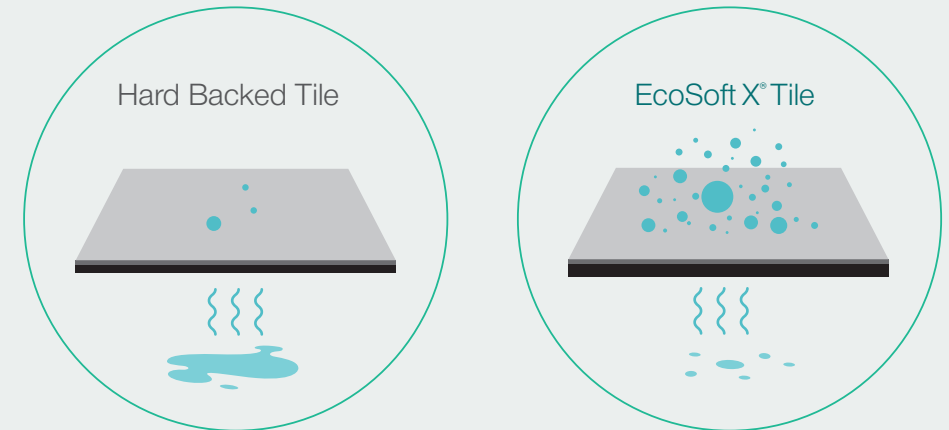
EcoSoft x<sup>®</sup> unique manufacturing process enables this non-woven backing to have superior dimensional stability without using environmentally harmful fiberglass, PVC, Bitumen or polymers.



## Wet-Slab Installation and Moisture Transmission

Changes in carpet tile adhesives, building schedules, and floor preparation processes have contributed to an increase in flooring installation failures, and in some cases the release of potentially harmful Volatile Organic Compounds (VOC's) into the indoor air environment. Moisture build-up under non-porous flooring like vinyl sheet, hard backed carpet tiles, and fixed timber floors, expose adhesives and tile backings to high pH levels; this is from alkalines within the concrete, concentrating in surface moisture that is unable to escape. This results in chemical breakdown of the adhesive and the release of potentially harmful VOC's.

The porous characteristics of EcoSoft x<sup>®</sup> carpet tile backing allows moisture within the slab to release (dry out), thus eliminating the risk of VOC build-up and adhesive failure from alkaline hydrolysis.



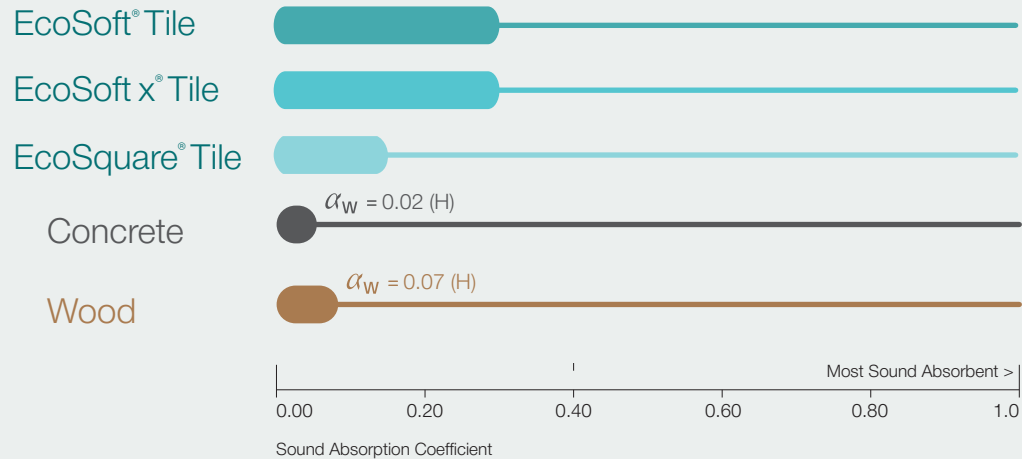


## Excellent Sound Absorption

EcoSoft x<sup>®</sup> is made from millions of fine PET fibers interlocked together in a needling process to form a compressed felt. The felt acts as a sound absorption having excellent acoustical properties. These noise reducing properties, drastically improve acoustics in the workplace, off-setting the higher cost of ceiling, wall of double glazed acoustical materials.

Surveys have shown that traceable sources of noise negatively affect human health creating stress and other problems. One of the most effective way of controlling noise levels is to suppress noise by using flooring with sound absorption properties such as EcoSoft x<sup>®</sup> backed modular carpet.

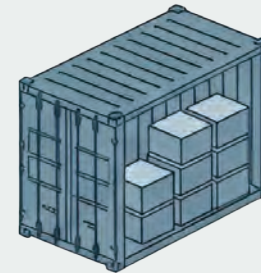
Sound Absorption EN ISO 354 and ISO 11654



## Optimized Container Loading Capacity

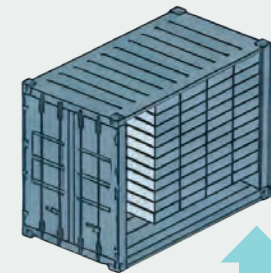
The thinner profile of EcoSoft x allows for a significant increase in volume per shipment.

- **Increased Yield:** You can now fit more square meters of carpet tile into a standard 20ft or 40ft container compared to the original EcoSoft.
- **Reduced Freight Costs:** More product per container means fewer shipments are required to fulfill large-scale projects, lowering the "landed cost" per square meter.
- **Storage Efficiency:** Beyond the ship, EcoSoft x takes up less vertical space in warehouses, allowing for higher pallet stacking and better utilization of square footage.



70-80%  
Full

**EcoSoft**  
Average Loading  
Capacity in m<sup>2</sup> per Container



100%  
Full

**EcoSoft x**  
Optimized Loading  
Capacity in m<sup>2</sup> per Container

Performance	EcoSquare	EcoSoft	EcoSoft x
Ergonomics	-	Excellent cushioning effect reduce leg fatigue	Cushioning effect reduce leg fatigue
Acoustics	Practical sound absorption	Superior sound absorption-for enhanced acoustic comfort	Efficient sound absorption-for standard performance and cost efficiency
Composition	Reinforced Recycle Hard Back	Recycled PET Cushion Back and PVC & Bitumen free	Recycled PET Cushionback and PVC & Bitumen free
Moisture Transmission	-	Applicable to Wet-Slab Installation	Applicable to Wet-Slab Installation
Transparency	Ingredient transparency through Declare Label	Ingredient transparency through Red List Free Label	Ingredient transparency through Red List Free Label
Air Quality	Low VOCs-meeting the requirements for Green Lable Plus Certification	Low VOCs-meeting the requirements for Green Lable Plus Certification	Low VOCs-meeting the requirements for Green Lable Plus Certification
Weight & Efficiency	-	Weight~20% less than EcoSquare – creating carbon reductions in transport and increasing efficiency in installation.	Weight ~16% less than EcoSoft and ~ 30% less than EcoSquare – creating carbon reductions in transport and increasing efficiency in installation.
Recycling	Reclamation and Recycling	Reclamation and Recycling	Reclamation and Recycling

### EcoSquare®: Engineered for Integrity

A high-performance backing solution designed for demanding environments where subfloor protection and fiscal efficiency are paramount.

- Advanced Top-Down Moisture Barrier: Features a specialized shield that prevents liquids and spills from penetrating deep into carpet fibers or the subfloor.
- Simplified Maintenance Protocols: Spills remain on the surface for rapid cleanup, reducing the need for intensive professional servicing
- Antimicrobial Environment: Preventing the growth of mold, mildew, and bacteria beneath the surface.
- Superior Cost-Effectiveness: To maximize value throughout its lifecycle by reducing the frequency of replacements.
- Low VOC Emissions: Specifically formulated to optimize indoor air quality (IAQ)

### EcoSoft®: The Ergonomic & Breathable Standard

A sustainable, human-centric design that prioritizes underfoot comfort and long-term structural stability.

- High-Breathability Matrix: Utilizes a unique structure that allows sub-floor moisture to evaporate naturally, preventing adhesive failure and floor bubbling.
- Bio-Inhibiting Moisture Management: Naturally inhibits the growth of bacteria and mold by eliminating moisture buildup, resulting in healthier IAQ.
- High-Density Cushion Layer: Features integrated ergonomic cushioning designed for superior impact absorption and significant fatigue reduction
- Acoustic Excellence: Create a quieter, more productive environment by neutralizing footfall noise and ambient echoes.
- Sustainable Composition: Manufactured from 80% recycled PET bottles and 100% free from PVC, bitumen, and harmful plasticizers.

### EcoSoft x®: Optimized Material Science

The next evolution in backing technology, re-engineered for lightweight efficiency without compromising structural integrity.

- Optimized Lightweight: Resulting in a substantially lower carbon footprint and enhanced logistical efficiency during transportation and installation.
- Breathable Structure: Retains the core DNA of the EcoSoft family, allowing for consistent sub-floor moisture evaporation
- Ergonomic & Safety: High-level impact absorption to minimize injury risks from accidental falls.
- Ultra-Low VOC Compliance: Non-toxic composition, ensuring the highest indoor air quality standards
- Market-Leading Value: Offers affordable sustainability, making high-end, eco-friendly backing



# Sustainability Carpet

- ✓ 100% Recyclable
- ✓ Compliance to Indoor Air Quality by Carpet and Rug Institute monitoring program
- ✓ Low Volatile Organic Compounds (VOCs) into the air improve workplace health & safety
- ✓ ECS - Australian Environmental Certification Scheme
- ✓ LEED - Leadership in Energy & Environmental Design
- ✓ SGBC - Singapore Green Building Product
- ✓ CE Mark - Conformity of European Safety Standard

# General Specifications

## Performance

End Use Classification	: BS EN 1307 Class 33 - Heavy Commercial
Caster Chair Index	: BS EN 985 > 2.4 Continuous use
Dimensional Stability	: BS EN 986 < 0.2%
Electrostatic Propensity	: AATCC 134 < 3.5 KV
Colorfastness to Light	: ISO 105 B02 min L6

## Flammability

Hot Metal Nut	: BS 4790 Low Radius
Radiant Panel Test	: ASTM E648 Class 1
Smoke Density	: ASTM E662 < 450
Surface Flammability	: ASTM D 2859 Passes

## Acoustic

Sound Absorption	: BS EN ISO 354 NRC 0.30 or higher (Superior Noise Reduction)
------------------	--





## WHY CHOOSE CARPET TILE OVER CARPET ROLL?

### Modular Flexibility

Adapt, expand, or refresh — without starting over. As spaces evolve, carpet tiles allow selective updates without replacing the entire flooring system.

### Reduced Waste & Smarter Installation

Optimized layout reduces off-cuts and material waste. The inherent precision of modular installation minimizes post-industrial waste to less than 5%, compared to 15%+ for broadloom. This efficiency directly contributes to Waste Management credits within green building frameworks.

### Easy to Handle, Easy to Transport

Compact modules simplify storage and logistics. Tiles are easier to carry, store, and move through elevators or tight corridors compared to broadloom rolls.

### Built for Long-Term Stability

Advanced backing resists shrinkage and edge curling. Engineered backing layers enhance dimensional stability, ensuring a flatter, more consistent floor over time.

### Easy Maintenance, Lower Lifecycle Cost

Swap damaged tiles instantly — no full-floor replacement. Targeted replacement reduces long-term maintenance costs and keeps the floor looking fresh for years.

### Design Without Limits

Mix colors. Create zones. Reconfigure anytime. Modular formats allow flexible layouts, directional patterns, and creative zoning without additional transitions.

### Install with Minimal Disruption

Fast installation. Lower downtime. Tiles can be installed in phases or occupied spaces, minimizing business interruption during renovation or upgrades.

### Contribution toward certification.

Sustainability is built into every square inch. The modular system drastically reduces the project's carbon footprint by eliminating unnecessary landfill waste, making it the preferred choice for LEED-certified developments and aligning with corporate ESG (Environmental, Social, and Governance) targets.

### **EcoSquare®: Engineered for Integrity**

A high-performance backing solution designed for demanding environments where subfloor protection and fiscal efficiency are paramount.

- **Advanced Top-Down Moisture Barrier:** Features a specialized shield that prevents liquids and spills from penetrating deep into carpet fibers or the subfloor.
- **Simplified Maintenance Protocols:** Engineered so that spills remain on the surface for rapid cleanup, reducing the need for intensive professional servicing or harsh chemical use.
- **Antimicrobial Environment:** By actively preventing the growth of mold, mildew, and bacteria beneath the surface, it ensures a cleaner indoor environment.
- **Superior Cost-Effectiveness:** A premium flooring solution designed to maximize value throughout its lifecycle by reducing the frequency of replacements.
- **Low VOC Emissions:** Specifically formulated to optimize indoor air quality (IAQ) for offices, schools, and residential homes.

---

### **EcoSoft®: The Ergonomic & Breathable Standard**

A sustainable, human-centric design that prioritizes underfoot comfort and long-term structural stability.

- **High-Breathability Matrix:** Utilizes a unique structure that allows sub-floor moisture to evaporate naturally, preventing adhesive failure and floor bubbling.
- **Bio-Inhibiting Moisture Management:** Naturally inhibits the growth of bacteria and mold by eliminating moisture buildup, resulting in healthier IAQ.
- **High-Density Cushion Layer:** Features integrated ergonomic cushioning designed for superior impact absorption and significant fatigue reduction for those standing for long periods.
- **Acoustic Excellence:** High sound absorption properties create a quieter, more productive environment by neutralizing footfall noise and ambient echoes.
- **Sustainable Composition:** Manufactured from 80% recycled PET bottles and 100% free from PVC, bitumen, and harmful plasticizers.

---

### **EcoSoft X®: Optimized Material Science**

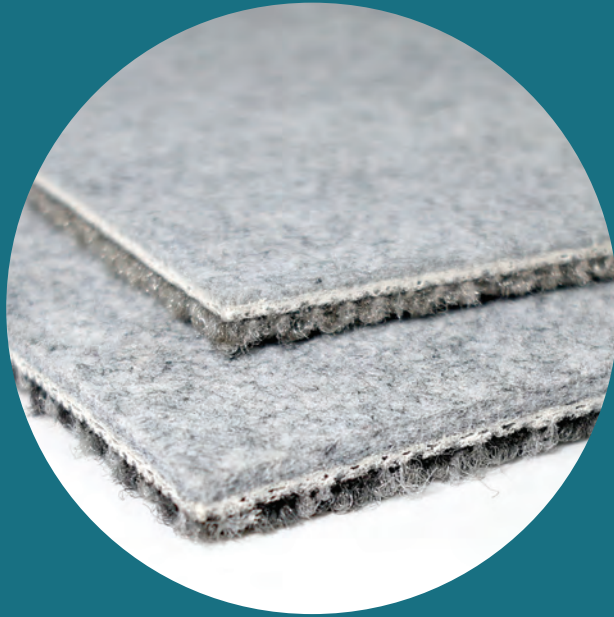
The next evolution in backing technology, re-engineered for lightweight efficiency without compromising structural integrity.

- **Optimized Lightweight Engineering:** Resulting in a substantially lower carbon footprint and enhanced logistical efficiency during transportation and installation.
- **Superior Breathable Structure:** Retains the core DNA of the EcoSoft family, allowing for consistent sub-floor moisture evaporation and hygiene.
- **Ergonomic & Safety Performance:** Despite the lighter profile, it delivers high-level impact absorption to minimize injury risks from accidental falls.
- **Ultra-Low VOC Compliance:** Remains a leader in non-toxic composition, ensuring the highest indoor air quality standards for large-scale commercial projects.
- **Market-Leading Value:** Offers affordable sustainability, making high-end, eco-friendly backing accessible without budget strain.



One Bottle  
Designed to  
Tread Lightly

Scan for more information.



---

# Carpets Inter<sup>®</sup>

Carpets International Thailand  
Public Company Limited

2054 New Petchburi Road  
Bangkapi, Huaykwang,  
Bangkok 10310 Thailand

Tel +66 (0) 2314-5402,  
Fax +66 (0) 2318-3537  
[info@carpetsinter.com](mailto:info@carpetsinter.com)

[www.carpetsinter.com](http://www.carpetsinter.com)

