

# Groundwork



A collection that embodies  
the essential strength and elegant  
structure upon which success is built.

Carpets Inter®

[www.carpetsinter.com](http://www.carpetsinter.com)



# Ground work

Laying the foundations and preparing the groundwork serve as the fundamental cornerstones for the successful outcome of any project. Adding the strength of character to build a solid outcome is key to success. Breaking Ground – Groundworks introduces a timeless, elegant organic structural base on which to build and carve out a successful future.

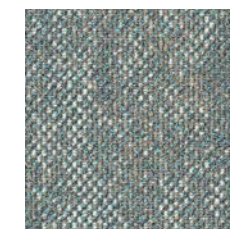
GROUNDWORK / CARPETS INTER





# Softening the Space, Strengthening Well-being.

**Introducing Groundwork an organic structural pattern that ensures your business is built on a foundation of timeless elegance and strength.**



GW05 Level





# Sustainable Foundations for a Healthier Office



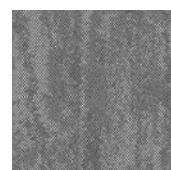
GROUNDWORK / CARPETS INTER



GW01 Pinnacle



GW02 Elevation



GW03 Altitude

**BUILDING ON GROUNDWORK MEANS ADDING THE STRENGTH OF CHARACTER, EFFORTLESS DESIGN QUALITY, AND SUSTAINABLE MATERIALS TO SUPPORT YOUR BUSINESS. IT'S ABOUT CARVING OUT A FUTURE THAT IS NOT ONLY SUCCESSFUL BUT SUSTAINABLE.**



# Eco-Conscious Comfort, for a Mindful Space

GROUNDWORK / CARPETS INTER



**When you invest in Groundwork,  
you're investing in the bedrock  
of the future. Ready to break  
new ground?**

GW06 Bedrock







GW01 Pinnacle

GW02 Elevation

GW03 Altitude

GW05 Level

GW04 Stratum

GW06 Bedrock

# Groundwork

## Carpet Tile Collection

### Specifications

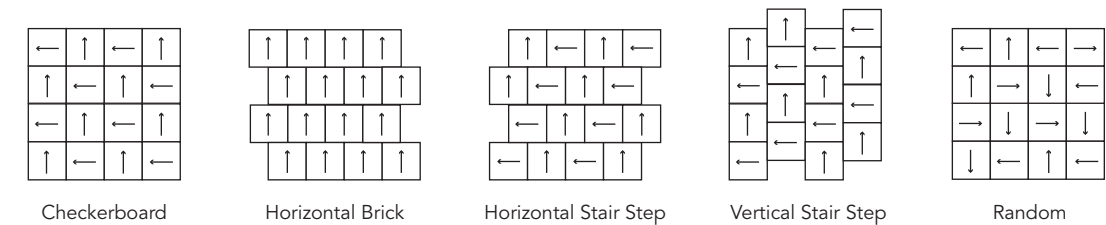
CONSTRUCTION	Multi-Level Loop Texture	Multi-Level Loop Texture
PILE FIBER	100% Solution Dyed Nylon	100% Solution Dyed Nylon
TUFTING GAUGE	1/12 inch	1/12 inch
PILE HEIGHT	3.0 - 5.5 mm.	3.0 - 5.5 mm.
TOTAL CARPET WEIGHT	3,422 gram/sq.m.	2,812 gram/sq.m.
BACKING STRUCTURE	 <b>EcoSquare®</b> Reinforced Recycled Hard Back	 <b>EcoSoft®</b> Recycled PET Cushion Back
PILE TREATMENT	Stain and Soil Protection	Stain and Soil Protection
STANDARD MODULE SIZE	50 x 50 cm.	50 x 50 cm.



Specifications are subject to normal manufacturing tolerances, and subject to change without prior notice. As in all quality carpets, colors are subject to dye lot variations.

### Installation Method

50x50 cm.






# Carpets Inter®

## Address

Carpets International Thailand PLC.  
2054 New Petchburi Road,  
Bangkapi, Huaykwang,  
Bangkok 10310 Thailand

## Social

-  [www.linkedin.com/company/carpetinter](http://www.linkedin.com/company/carpetinter)
-  [www.instagram.com/carpets\\_inter](http://www.instagram.com/carpets_inter)
-  [www.vimeo.com/carpetsinter](http://www.vimeo.com/carpetsinter)
-  [www.pinterest.com/carpetsinter](http://www.pinterest.com/carpetsinter)
-  LINE ID: @carpetsinter

Tel: +66(0)2314-5402  
E-mail: [info@carpetsinter.com](mailto:info@carpetsinter.com)  
Website: [www.carpetsinter.com](http://www.carpetsinter.com)



[Learn More](#)