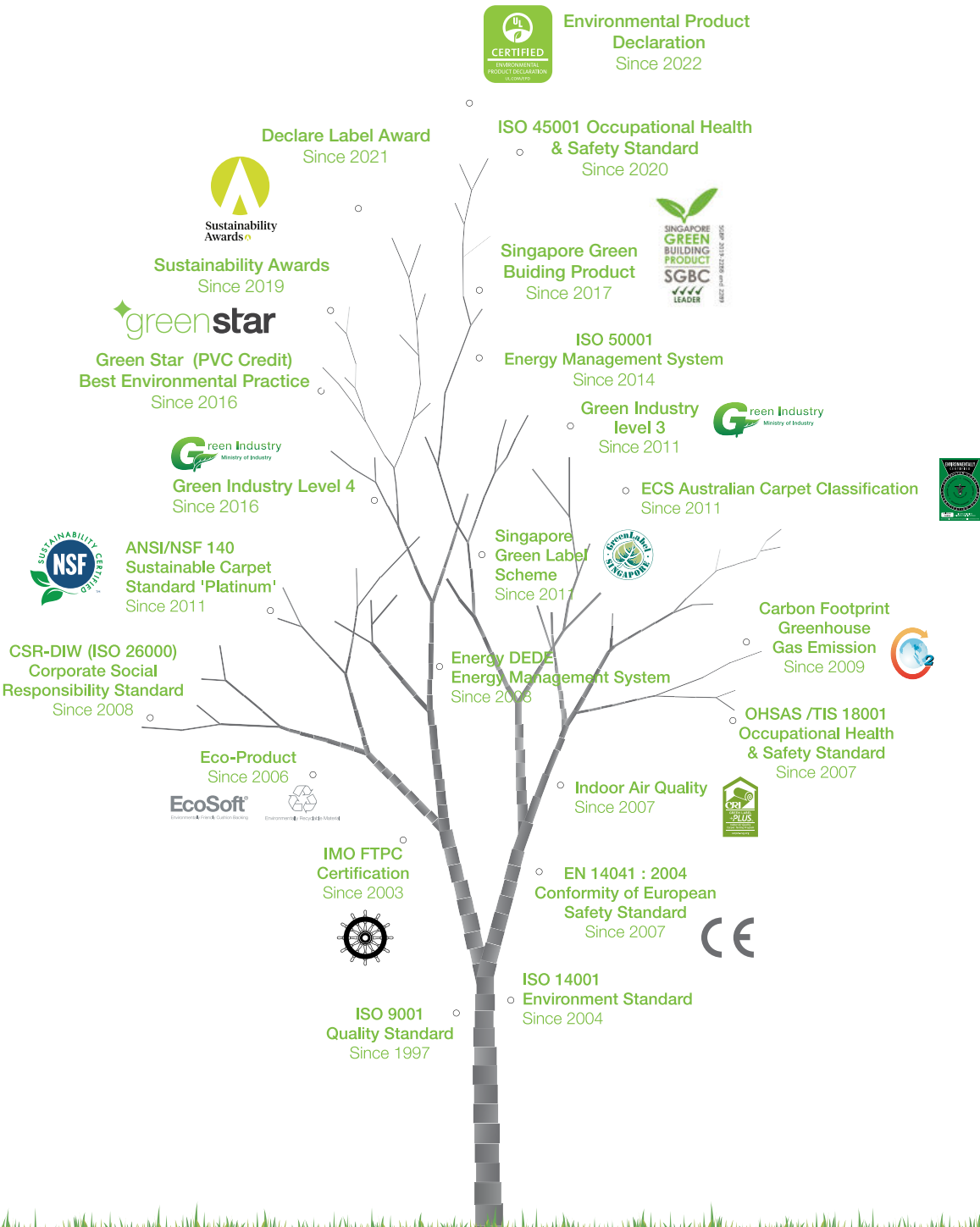


Committed to the continuous growth of social responsibility and environmental practices.



Sustainable Minds™

Sustainable Minds

Sustainable Minds is dedicated to operationalizing environmental performance in mainstream product development and manufacturing in an understandable, empowering, and credible way. Carpets Inter carpet tiles are being listed on Sustainable Minds/WELL register now for application into WELL Certified Buildings.



Green Label Plus

Green Label Plus (GLP) is the flooring carpet standard for indoor air quality. It is an independent testing program that identifies carpet with very low emissions of VOCs (13 chemicals).

The certified product can deliver the point associated with IEQ credit 4.3 of LEED and IE 2.3 of TREES-NC (Thailand's Rating of Energy and Environmental Sustainability for New Construction and Major Renovation).



NSF 140

The first ANSI approved, multi-attribute sustainable carpet assessment standard which identifies that the certified carpets have reduced environment impact according to the award requirement.

This standard is the most comprehensive and rigorous benchmark in the U.S. flooring industry.

NSF 140 was designed to establish a system with varying levels of certification to define sustainable carpet. The sustainable carpet standard NSF 140 is recognised within the LEED scheme, the US equivalent to Green Star.



Environmental Certification Scheme (ECS)

The Code of Practice is an important element of the environmental certification of carpets registered with the Australian Carpet Classification Scheme (ACCS). This Code provides a guide to good environment management in all aspects of carpet manufacturing, and the subsequent carpet life cycle performance. The provisions of the Code include Raw Materials, Manufacturing, Environmental Risk Management, Land and Ground Water Management, and Records and Reporting.



Sustainability Awards

With Australia being a global leader in sustainable and environmental practices, Carpets Inter's EcoSoft® recently entered and beat over 35 entrants to WIN 1st prize in the 'Waste Elimination' category, an award voted by leading Australian architects and environmentalists.

The award recognizes Carpet Inter's continued efforts to provide Australia's leading Architects and Interior Design practices with fit for purpose sustainable product solutions, suitable for WELL Buildings in many appealing styles.



Green Industry

This guideline manual for entrepreneurs' green industry development is a part of green industry accreditation activity. It is a sample of guidelines for entrepreneurs who commit to environmentally-friendly business operations for sustainable development aimed at continuous improvement and social and environmental environment, both inside and outside the organization throughout the supply chain.



Environmental Product Declaration

EPD (Environmental Product Declaration) is an independently verified and registered document that communicates transparent and comparable information about the life-cycle environmental impact of products.



Declare Label

Declare is regarded as the toughest materials transparency standard in sustainable construction. The Declare program enables manufacturers to communicate their product ingredients in an effort to promote transparency and accountability.

Our Solution Dye Nylon EcoSoft® PETFelt Cushion modular carpet tile has received the highest award of 'LBC RED LISTFREE' under the International Living Future Institute (ILFI) Declare Label Award program.



Singapore Green Building Product

The Singapore Green Building Council forges public-private partnerships to foster innovative industry solutions across the entire building and construction value chain. Through its green building product and green building services labelling programmes, SGBC sets high standards for green building solutions both locally and regionally to help build more sustainable cities for better living.



Carbon Footprint

Carbon Footprint of Products (CFP) takes into account the quantity of GHG emissions from each production unit throughout the whole life cycle (cradle-to-grave) of a product. Carbon footprint thus calculates the carbon dioxide equivalent (CO₂ eq) of the GHG emissions releasing from the raw material acquisition, manufacture, use, waste management and final disposal including related transports in all stages.

However, carbon footprint value only considers the product's environmental impacts in term of climate change, but excludes other environmental impact categories, such as biodiversity, acidification and eutrophication.



Singapore Green Labelling Scheme

The Singapore Green Labelling Scheme (SGLS) was launched in May 1992 to endorse consumer products and services that have less undesirable effects on our environment. This is administered by the Singapore Environment Council.

The SGLS is applicable to most products except food, drinks and pharmaceuticals. Green Label products include items produced locally or internationally that have been evaluated through stringent standards.