

An orange circular logo with a white dandelion seed head icon. The text "Red List Free" is written in white, bold, sans-serif font. Below it, in smaller white text, are the words "INTERNATIONAL LIVING" and "FUTURE INSTITUTE".

Red List  
Free

INTERNATIONAL LIVING  
FUTURE INSTITUTE

# Senior Living, Education & Wellbeing

---

## Flow Soft<sup>®</sup>

Recycled Cushion Back Carpet with 100% Moisture-Proof Barrier



Carpets Inter<sup>®</sup>



## Senior Living, Education & Wellbeing

**We** may not be able to predict our future, but one thing's for sure we can assist to prolong it from one generation to the next by providing hygiene and wellness within the spaces we occupy, be it accommodation, educational or professional...

**A primary** contributor for creating 'wellbeing' within a building is the type of flooring used.



# INTRODUCTION

TO SENIOR LIVING, EDUCATION & WELLBEING

## GENERAL

The primary requirement governing the selection of flooring for Senior Living, Education & Wellbeing environments is that it should be 'fit for purpose', i.e., that the functional performance of the flooring should match the users' requirements. This definition covers not only the physical or functional performance, but also the many factors that impact users and occupants, and are a recognized part of the user experience, e.g., acoustic, warmth, comfort, grip, non-allergic, odour free & color.

## MATERIAL PROPERTIES

Simply put, flooring materials can be classified as hard, resilient or soft. Hard and soft materials are easily distinguished and represented by ceramic tiles at one end of the scale and textile floor finishes at the other. Between are a wide selection of semi-hard resilient finishes, including vinyl sheet, LVT, SPC, rubber and linoleum.

Within each category a further level of properties includes imperviousness, smoothness, slip-resistance, fire hazard properties, dirt retention/control, component size and method of joining, all of which affect the suitability for selection and use.

**FlowSoft** offers superior Sound Absorption ensuring a calm, relaxing and stress-free environment...



## PERFORMANCE

'Fit for Purpose' implies that floor finishes achieve the performance required for the intended use, such as:

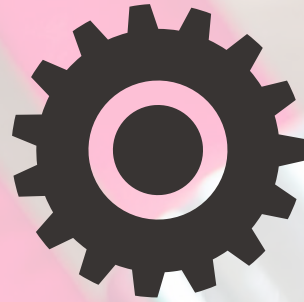
- Safety and OHS
- Odour control
- Fire safety
- Interior environment quality (IEQ), including acoustic control and indoor air quality (IAQ)
- Being reassuring and comfortable, including underfoot comfort
- Sustainable or low environmental impact
- Ease of cleaning and low maintenance
- Whole of Life Costing (WLC) and Life Cycle Assessment (LCA) efficiency
- Accessibility, wheelchair and wheeled equipment use.

Many Healthcare & Educational facilities are governed by regulation, e.g. accessibility, safety, acoustic, fire safety and OHS. It is essential that the architect and/or interior designer consult with the client representative and product manufacturer to ensure that the end product can be signed-off as suitable and 'fit for purpose'.



## **The key performance criteria**

for any Senior Living, Education or Wellbeing facility are ambient noise reduction, hygiene and safety. Aesthetics, ergonomic comfort and environmentally friendly fabrication create an all-round **'fit for purpose'** product....



# WHY USE CARPET...

## WHEELCHAIR - ROLLING RESISTANCE

The superior density and dimensional stability of **QFlowSoft** provides a firm substrate, whereupon the resultant net force required to sustain rolling movement of a standard Wheelchair loaded with 150 lb is 4.4 lbs. This is considered to be within normal OHS standards.

## ENERGY SAVING

Ambient temperature fluctuations which can occur with hard flooring, can be minimised by the use of **QFlowSoft** carpet. In controlled experiments by textile laboratories measuring heat consumption of two identical dwellings (one with and one without fitted carpet), results showed energy savings of up to 20%.

\*Studied by Carpet Institute of Australia

## UNDERFOOT COMFORT

Carpet effectively absorbs foot impact and reduces leg muscle fatigue to a greater degree when compared with hard floor impact. Comfort under foot translates to a higher degree of comfort for the occupant and may assist to increase the overall productivity of the staff working within the facility.

## MOISTURE PROOF BARRIER

**QFlowSoft** has an in-built thermoplastic moisture proof barrier, providing total assurance against moisture penetration to the subfloor and prevention of bacterial growth.

## GLARE REDUCTION

Some Homogeneous & Ceramic Hard Flooring are reflective, creating glare from sunlight or overhead lighting which may disorient elderly occupants, potentially causing them to fall. **QFlowSoft** carpet will prevent glare and provide a consistent focal point.

## NOISE REDUCTION

With an ability to reduce impact sound by 29 decibels, which is far superior to any other floor finish, **QFlowSoft** creates a calm and stress free occupied space.



## AESTHETIC

Carpet offers the interior unlimited pattern and color options. The unique cushion backing of **QFlowSoft** disguises joins for a seamless and balanced overall effect.

## SLIP RESISTANCE

Underfoot grip is essential. Senior Citizens and physically active children require firm contact with the flooring surfaces. Independent tests show that whilst falls on carpeted flooring resulted in only 20% injury, it increased to over 50% on Hard floor!



SLIP RESISTANT

## INDOOR AIR QUALITY (IAQ)

Carpets using 100% synthetic materials perform best in Healthcare spaces. Airborne dust and bacterial particulates are released through everyday foot traffic and/or drafts from access routes. While hard surface floors allow allergens to be kicked up into the air - potentially triggering allergic reaction, **QFlowSoft** continuous filament solution dyed Nylon with Sanitized<sup>®</sup> Anti-Bacterial and odor reducing technology improves indoor air quality by capturing dust and small particulates within its pile surface, until they are vacuumed away.

## OPERATIONAL DISRUPTION

**QFlowSoft** composite PET felt cushion back can be installed onto rough floor finish up to 75%RH, reducing floor preparation, installation duration and cost considerably. This avoids impact to the facility operation and prevents prolonged inconvenience to the occupants.

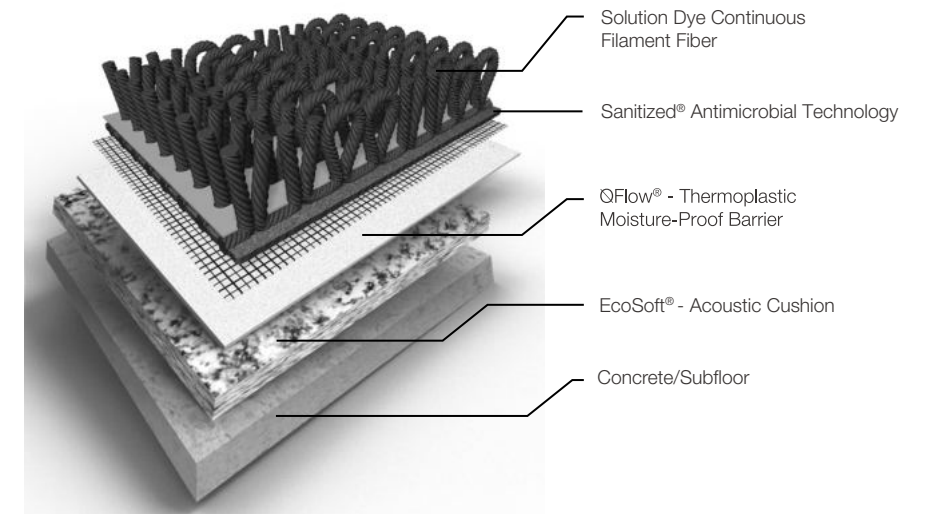


# QFlowSoft®

Recycled Cushion Back Carpet  
with 100% Moisture-Proof Barrier

**QFlowSoft®** is a uniquely engineered 'one of a kind' recycled PET bottle cushion backing with an integral 100% thermoplastic moisture-proof barrier system between the carpet and the subfloor. Traditional carpet backings are porous, allowing liquid spills to penetrate into the subfloor, where they cannot be effectively removed. This will lead to odour's and potential growth of harmful bacteria, mold and mildew. QFlowSoft® is treated with Sanitized® Antimicrobial technology, which hinder microbial growth.

Carpet seams are sealed during installation with an anti-microbial seam-weld to prevent moisture penetration, ensuring that accidental spillages onto QFlowSoft® remain on the carpet surface, where they can be readily spot cleaned and treated.



# Sanitized®

Integral Sanitized® Antimicrobial technology provides lifetime hygiene and cleanliness.

- ▶ Safe to occupants and the environment.
- ▶ Peace of mind protection from bacterial and fungal growth.

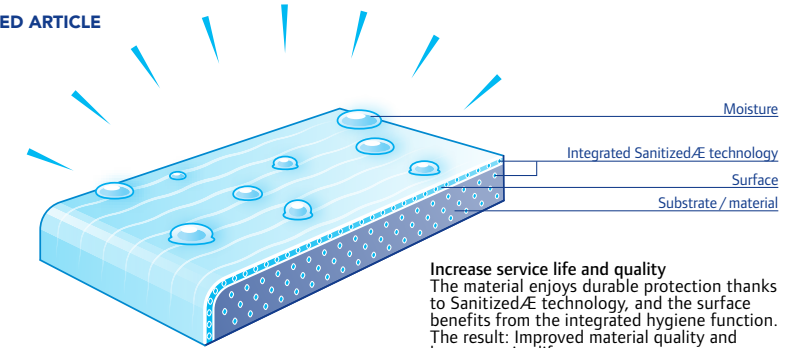


## LONG-LASTING HYGIENE MANAGEMENT

Long-lasting material protection thanks to SanitizedÆ technology

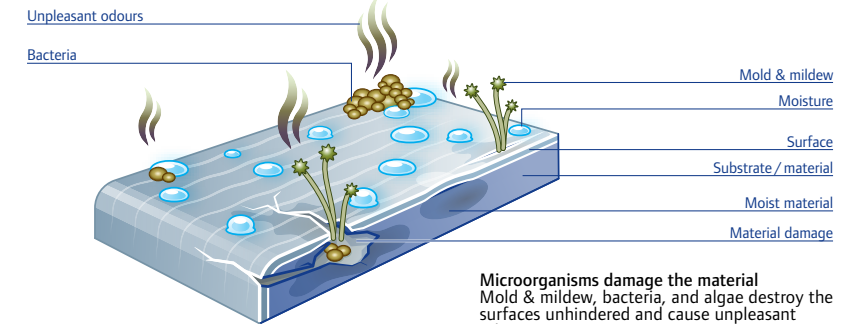


### PROTECTED ARTICLE



**Increase service life and quality**  
The material enjoys durable protection thanks to SanitizedÆ technology, and the surface benefits from the integrated hygiene function. The result: Improved material quality and longer service life.

### UNTREATED ARTICLE



**Microorganisms damage the material**  
Mold & mildew, bacteria, and algae destroy the surfaces unhindered and cause unpleasant odours.

Sanitized® Antimicrobial technology provides QFlowSoft® with long-lasting protection against the colonization of microbial aggressors like bacteria, mold and mildew that cause material degradation, stains and unpleasant odours.

For specific information on Sanitized® Anti-Viral properties please contact Carpets International™.





Recycled Cushion Back Carpet  
100% Moisture-Proof Barrier

## ØFlowSoft® - Outstanding Features

### Benefits to Occupied Wellbeing

- Available in a broad selection of colors & patterns, created for Senior Living, Education & Wellbeing
- Engineered for handicapped (Walking Frame & Wheelchair) apparatus
  - Anti-Slip & Anti-Trip
  - Reduces leg fatigue
  - Reduced pile fiber crush; minimal wear and tear prolongs appearance retention
- Superior sound absorption prevents noise disturbance to occupants.
- Thermal Insulator reduces energy cost by over 20% within the installed facility.
- Treated with Sanitized Anti-Microbial hygiene protection against all harmful bacteria
  - Improves Indoor Air Quality & expedites wet cleaning cycles
- Cleaning & Maintenance
  - Moisture-Proof Barrier mean Spillages remain within the Pile surface
  - Prevents harmful chemicals and body fluids penetrating the floor-covering
  - Scotch-guard Stain resistant
- 10-Year Limited Wear Warranty

### ØFlowSoft® Backing

- Post-Consumer recycled PET bottle 'EcoSoft®' layer, prevents billions of waste plastic bottles entering to Landfill or Ocean pollution.
- Integral 100% thermoplastic ØFlow® layer provides impervious barrier to moisture penetration.
- No harmful PVC, Bitumen or Fiberglass achieving low VOC's for superior OHS.
- Superior Dimensional stability

### Installation

- Supplied as 2.00m-wide easy to handle roll modules decreasing average installation schedule by +50%, achieving minimal disruption to occupied spaces.
- May be applied onto unburnished floor, eliminating expensive floor preparation.
- ØFlowSoft® is installed onto quick-release adhesive, such upon completion of the warranted lifespan it may be uplifted with minimum affect to the substrate, avoiding prolonged and expensive repairs often necessary after uplifting hard and/or resilient flooring.
- Seams are welded with Anti-microbial seam-sealant that prevents moisture penetrating the substate
- Spare maintenance stock may be stored upright with minimal space/cost and inconvenience to facility operations.

### Environmental

- Environmentally Friendly - 100% Recyclable at your local recycling center



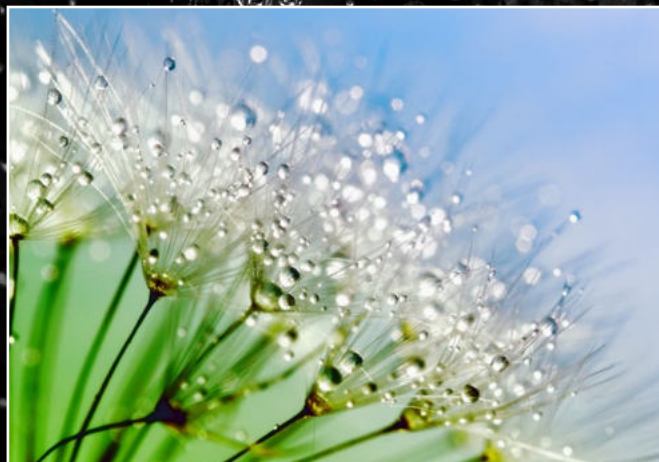
*Fit for Purpose...*

*Carpets Inter provide durable “fit for purpose” floor covering solutions for Senior Living, Education & Wellbeing facilities.*



**Flooring** becomes **a key design medium,** allowing for the creation of truly unique design statements without compromising performance.

**FlowSoft®** is available in a broad selection of colors and patterns to provide **‘soil hiding’** and a focal point to support **‘way-finding’** for senior living & education....



**NEVOA GIVES A NEUTRAL BACKDROP OF CALM SERENITY TO ANY INTERIOR WITH A SUBTLE TONAL PATTERN GRADUALLY REVEALING ITSELF.**

Névoa evokes a feeling of quiet contemplation, the calm and tranquility brought into contrast when the mist clears.



Storm  
NV 02



Fog  
NV 03



Haze  
NV 04



Rain  
NV 05



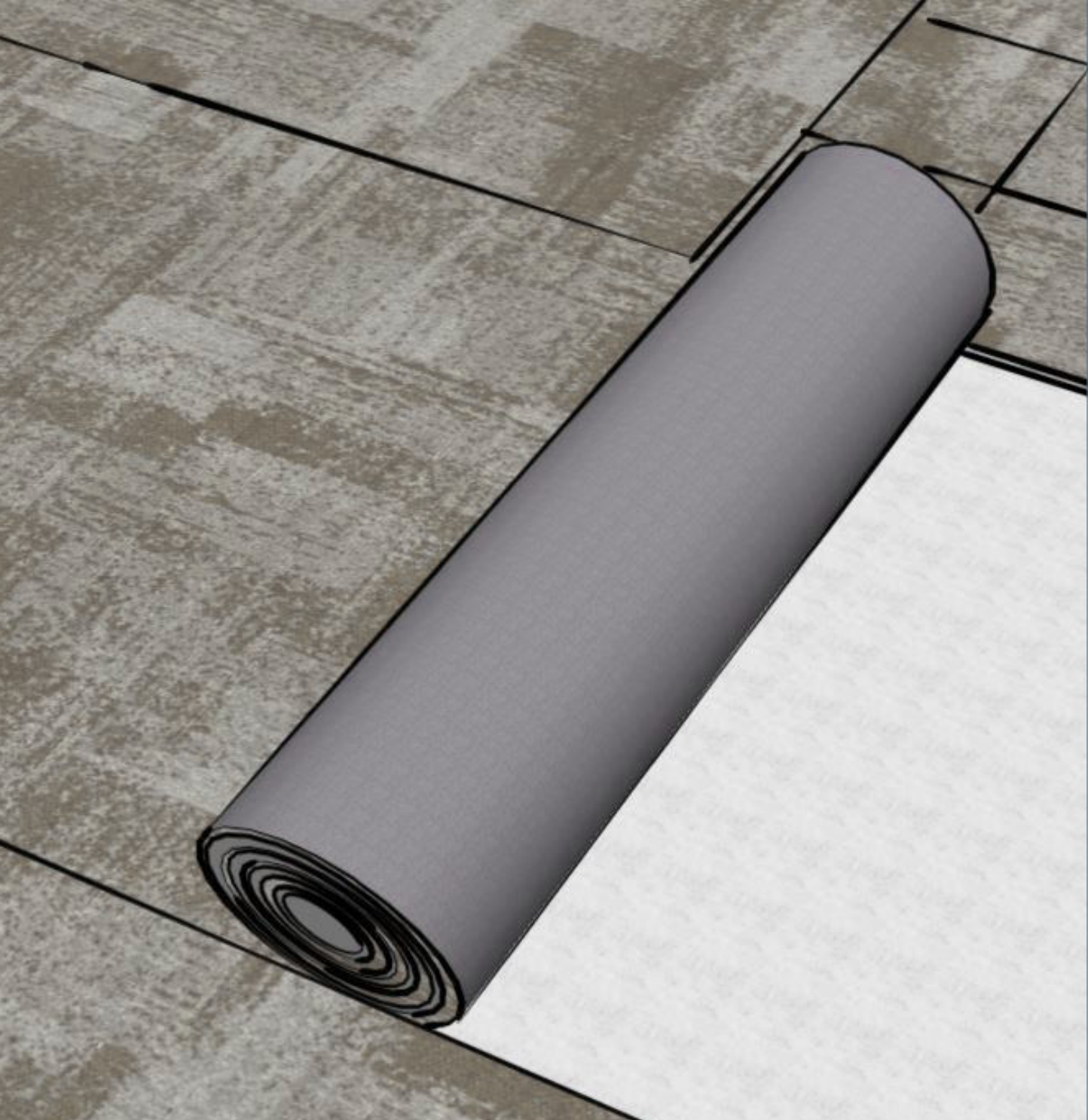
Drizzle  
NV 06



Dew  
NV 07

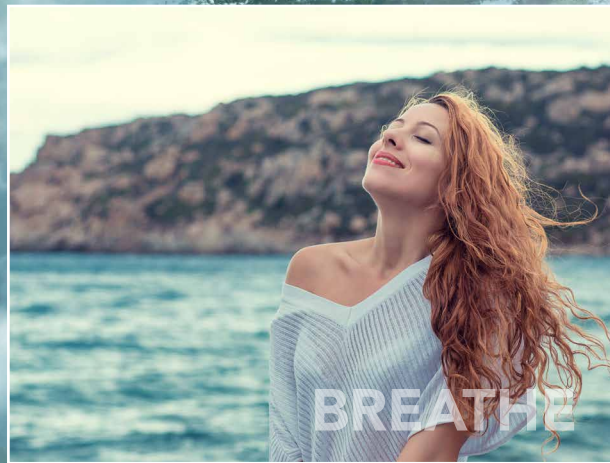
Available in six carefully selected colors to suit the interior ambiance for Senior Living, Education and Wellbeing environments.





A selection of **color & texture** to suit Senior Living, Education & Wellbeing interiors.

All Carpets Inter Collections will **coordinate across** our alternative modular (EcoSoft® & EcoSquare®) and roll (QFlowSoft®, QFlow® & MegaPlank®) products.



# Inhale..... Exhale..... Just BREATHE..!

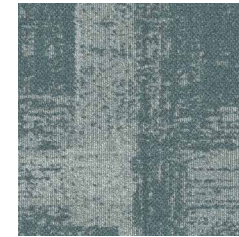
Carpets Inter has donated thousands of tons of waste every year to making organic crop fertilizer. This helps generate healthier plants and healthier soil via natural sequestration of Carbon Dioxide from the atmosphere. This helps to synchronize the planets eco-system to ensure that we Breathe a little easier every day...



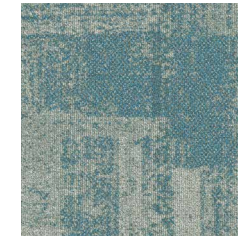
Incense  
IN 07



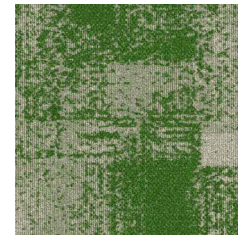
Vapour  
IN 01



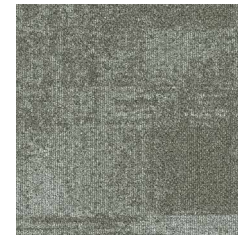
Oxygen  
IN 02



Fresh  
IN 10



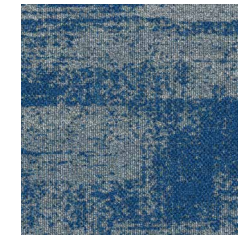
Scent  
IN 08



Particle  
IN 03



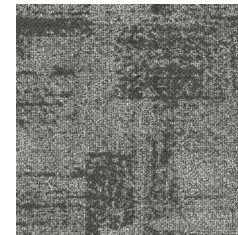
Ozone  
IN 04



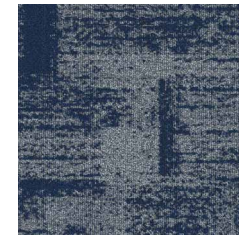
Aroma  
IN 11



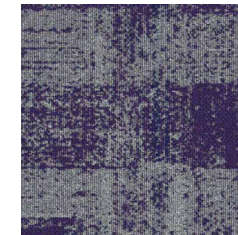
Fragrance  
IN 09



Carbon  
IN 05



Atmosphere  
IN 06



Perfume  
IN 12

Available in twelve carefully selected colors to suit the interior ambiance for Senior Living, Education and Wellbeing environments.





**APEX II**

## **APEX II – APEX REPRESENTS THE PINNACLE POINT OF AN ARCHITECTURAL STRUCTURE.**

Offering an understated textural pattern designed to compliment the interior with a quiet and functional aesthetic.



**Soapstone**  
AA 02



**Slate**  
AA 03



**Raven**  
AA 05



**Dusk**  
AA 15

Available in four carefully selected colors to suit the interior ambiance for Senior Living, Education and Wellbeing environments.




## **When choosing floor covering**

for Senior Living, Education & Wellbeing facilities, remember it is essential that the architect, interior designer and building contractor consult with the client representative and product manufacturer to ensure that the end product can be signed-off as suitable and **‘fit for purpose’** for each individual location within the facility.

**Carpets Inter, providing healthier flooring solutions....**



## ALL OCCUPIED SPACES - HEAVY DUTY

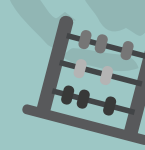
Specifications	
Pile Fiber	100% Solution Dyed Nylon
Roll Size	Up to 16 linear meter x 2 meter wide roll
Backing Structure	<b>FlowSoft</b>
Performance	
Application - Suitable for all locations	Wards, Day Care, Senior Living, Dementia Care, Accomodation, Education, and Wellbeing
Wear Classification	(BS EN 1307:2014) Class 33 - Heavy Commercial Use
British Spill Test Method E	Passes: No Penetration Occurred
Electrostatic Propensity	AATCC 134 $\leq$ 3.0 KV
Colorfastness - To Light - To Rubbing Wet - To Rubbing Dry	ISO 105-B02 Minimum 6 ISO 105 - X12 Minimum 4 ISO 105 - X12 Minimum 4
Wellbeing	
Sanitized <sup>®</sup> Antimicrobial	Neutralizes Covid Type Virus, Harmful Bacterial and Microbial Infestations (See Pg: 10) AATCC-174 Part I, II, and III
Indoor Air Quality	ASTM D5116-97 - No harmful VOC's
Wheel Chair Resistance	Force to movement $\geq$ 4.4 lbs
Slip Resistance	ASTM C 1028 Static coefficient of friction $>$ 0.70
Acoustic	
Sound Absorption	BS EN ISO 354 NRC 0.30 or higher
	
Flammability	
Hot Metal Nut	BS 4790 Low Radius
Surface Flammability	ASTM D2859 / CPSC FF 1-70 Pill Test Pass
Reaction to Fire Test	BS EN ISO 9239-1 $\geq$ 4.5 kW/m <sup>2</sup>

### CERTIFICATION



# SENIOR LIVING, EDUCATION & WELLBEING PROJECTS

- 📍 Bialik College, Australia
- 📍 Caroline Chisholm College, Australia
- 📍 Gunghalin College, Australia
- 📍 RMIT Univesity, Australia
- 📍 Southern Cross Catholic College, Australia
- 📍 St Flannan's Catholic Primary School, Australia
- 📍 Trinity Grammar School, Australia
- 📍 Trinity Senior School, Australia
- 📍 Vogel Campus, New Zealand
- 📍 Sultan Qaboos University, Oman
- 📍 Supreme Education, Qatar
- 📍 HCT Al Ain Campus, UAE
- 📍 National University of Singapore
- 📍 Kumon Co., Ltd, Thailand
- 📍 Bayside Specialist Centre, Australia
- 📍 City Fitness, New Zealand
- 📍 Fernwood Fitness Parramatta, Australia
- 📍 Healthscope Dromana, Australia
- 📍 Marly Hemisphere Nursing Home, Australia
- 📍 Southbank Medical Clinic, Australia
- 📍 Pacific Radiology, New Zealand
- 📍 St George's Hospital, New Zealand
- 📍 Bumrungrad International Hospital, Thailand
- 📍 Vejthani Hospital, Thailand

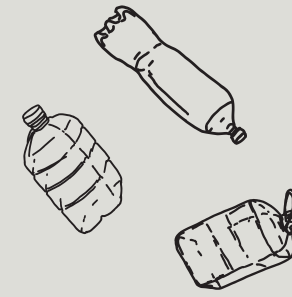




## ENVIRONMENTAL

The Carpets Inter facility is certified under ISO:14001, assuring that our environmental compliances meet globally recognized standards. We are committed to minimizing environmental impact at every stage of production, by: -

- Continued use of recycled and recyclable synthetic fiber
- Low-VOC raw material into all manufactured product
- Zero landfill since 2009, by repurposing all manufacturing offcut into Refuse Derived Fuel, donated to manufacturing Cement and clean Energy Power generation.
- Recycling waste water and effluent with onsite treatment plant, eliminating off-site discharge.
- Sediment donated to agricultural fertilizer for domestic organic crop growth, creating a natural carbon capture towards a green planet and cradle to cradle policy.
- Tree Planting and paper recycling programs
- Member of the Carpet & Rug institute Indoor Air Quality



## THE PATH TO ONE BILLION



To date EcoSoft™ has recycled over 787 million PET bottles from polluting our planet... Be a part of this mission!

At Carpets Inter, we create modular carpet that does more than just make the world more beautiful; it makes it more livable. We do this with products that meet stringent indoor air-quality needs, are safe to manufacture and utilize and incorporate recycled materials wherever feasible including our unique EcoSoft® backing fabricated from millions of recycled plastic bottles. Our commitment to ecological sustainability extends beyond our product. We practice it in everything we do – from manufacturing facilities that maintain the highest environmental standards, to reducing our carbon footprint in every facet of our global business.

**We will  
RECYCLE OVER  
1,000,000,000  
discarded  
PLASTIC BOTTLES  
by 2025**

EcoSoft® by Carpets Inter®

EcoSoft® marks a new era in the development of high-performance and environmentally friendly carpet cushion backing.

Natural spring water may be good for your health, but the bottles themselves threaten our environment by swallowing landfill space and increasing air-pollution from incineration. Uncontrollable volumes of plastic waste continue to flow into our oceans every second! EcoSoft®, our established high performance carpet cushion backing, is made from 80% post-consumer material reengineered from discarded drinking water bottles plus 5% post-industrial recycled PET. So you can breathe and walk with ease.

**THE SOLUTION  
TO CLIMATE CHANGE  
IS JUST  
BENEATH THE SURFACE**

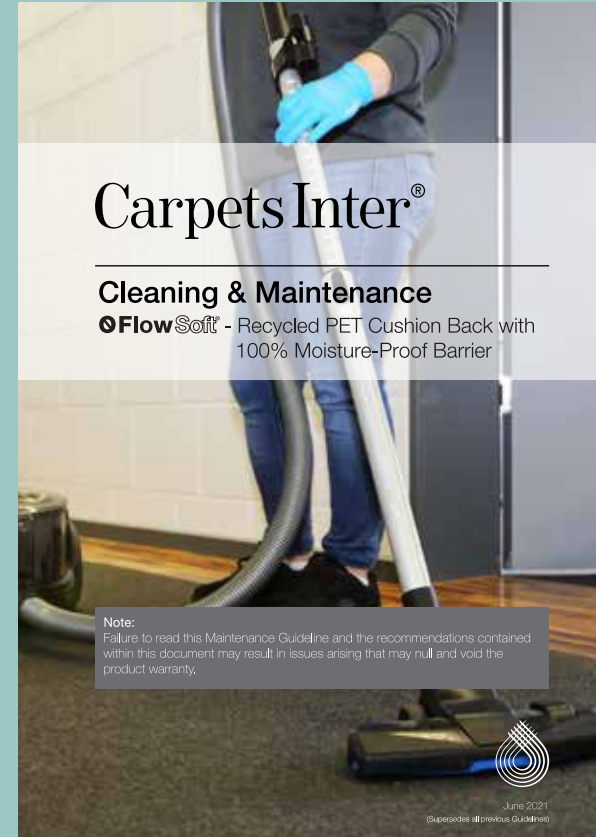
**CARBON CAPTURE**



## Installation Guideline



This product must be installed in conformance to the manufacturers guideline. Failure to do so will null & void the product warranty.



## Cleaning and Maintenance Guideline



This product must be cleaned in conformance to the manufacturers guideline. Failure to do so will null & void the product warranty.

# Carpets Inter®

**Carpets International Thailand**  
Public Company Limited

2054 New Petchburi Road  
Bangkapi, Huaykwang, Bangkok 10310 Thailand  
Tel +66 (0) 2314-5402, Fax +66 (0) 2318-3537  
info@carpetsinter.com

[www.carpetsinter.com](http://www.carpetsinter.com)

