



Carpets Inter[®]

THE ADL-ANPDS



HEADLANDS

head • land /'hedlənd, 'hed,lənd/

a coastal landform, usually high and often with a sheer drop that extends into a body of water.

Looking out from the headland where nature perfectly balances two worlds. Between land and water, hard and soft, familiar and unfamiliar. Inviting promises of adventure and new discovery.

Anticipate new **pathways**, traverse from **peaks** to the cliff's **edge**, between the known and the unknown . . .

. . . what possibilities lie ahead?

Headlands is a modular carpet tile collection designed to invigorate the simple elegance of Flatlands to produce a beautiful partnership which invites a sense of play and endless possibilities.



HEADLANDS

The sun's rays gently rise over the
Headlands to welcome a
new day

PEAKS

Where colors combine as
peaks melt into
skyline

EDGE

Rocky shorelines reflect colors
of lands fusion with
water

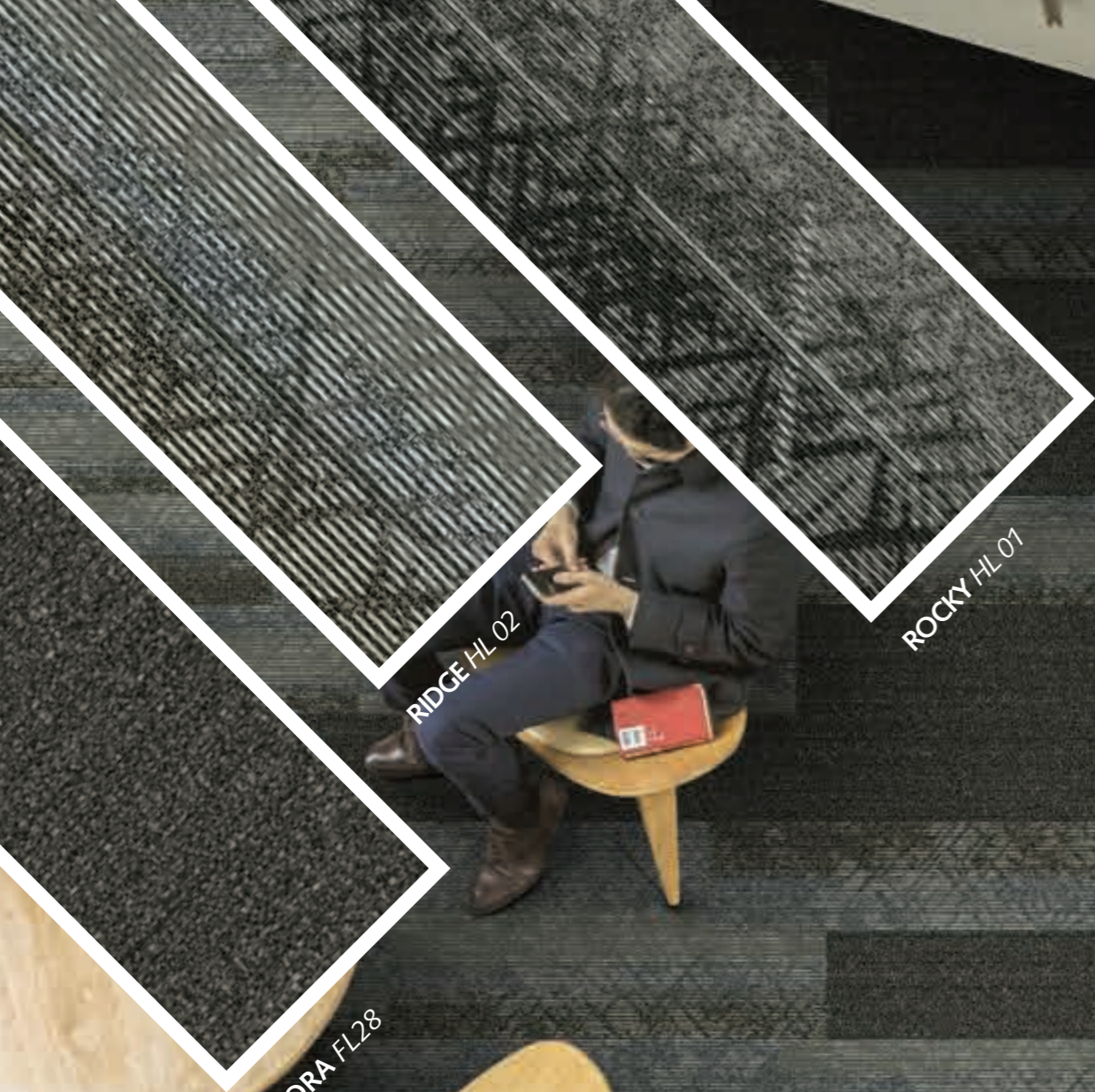
PATHWAYS

A spectrum of color viewed
along coastal
pathways

PEAKS

A wide-angle landscape photograph of a mountain valley. In the foreground, a person is sitting on the edge of a large, flat, light-colored rock ledge that juts out over a deep valley. The person has their arms raised in a celebratory gesture. Below the ledge, a calm lake with a light blue-green hue winds through the valley. The surrounding mountains are rugged and covered in patches of snow, with their peaks fading into the distance. The sky is filled with dramatic, layered clouds in shades of blue, grey, and white, suggesting a late afternoon or early morning setting. The overall color palette is dominated by blues, greys, and earthy tones.

Where colors combine as
peaks melt into skyline



RIDGE HL 02

ROCKY HL 01

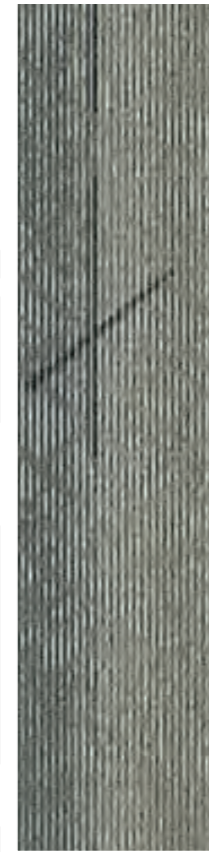
STORA FL28





RELAX

**LUXURIOUS UNDERFOOT
COMFORT ENHANCING SUPERIOR
SOUND ABSORPTION**



PENINSULA
HL 04

**UNIQUE COMBINATIONS TO
CREATE THE PERFECT MOOD
TO RELAX & RECHARGE**

LANTOTO
FL 11

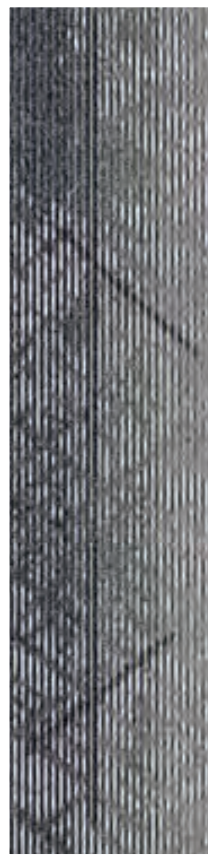


RIDGE
HL 02



RECHARGE

**SUBTLE HIGHLIGHTS
OF COLOR TO
ENLIGHTEN SOCIAL
SPACES**



OUTCROP
HL 03

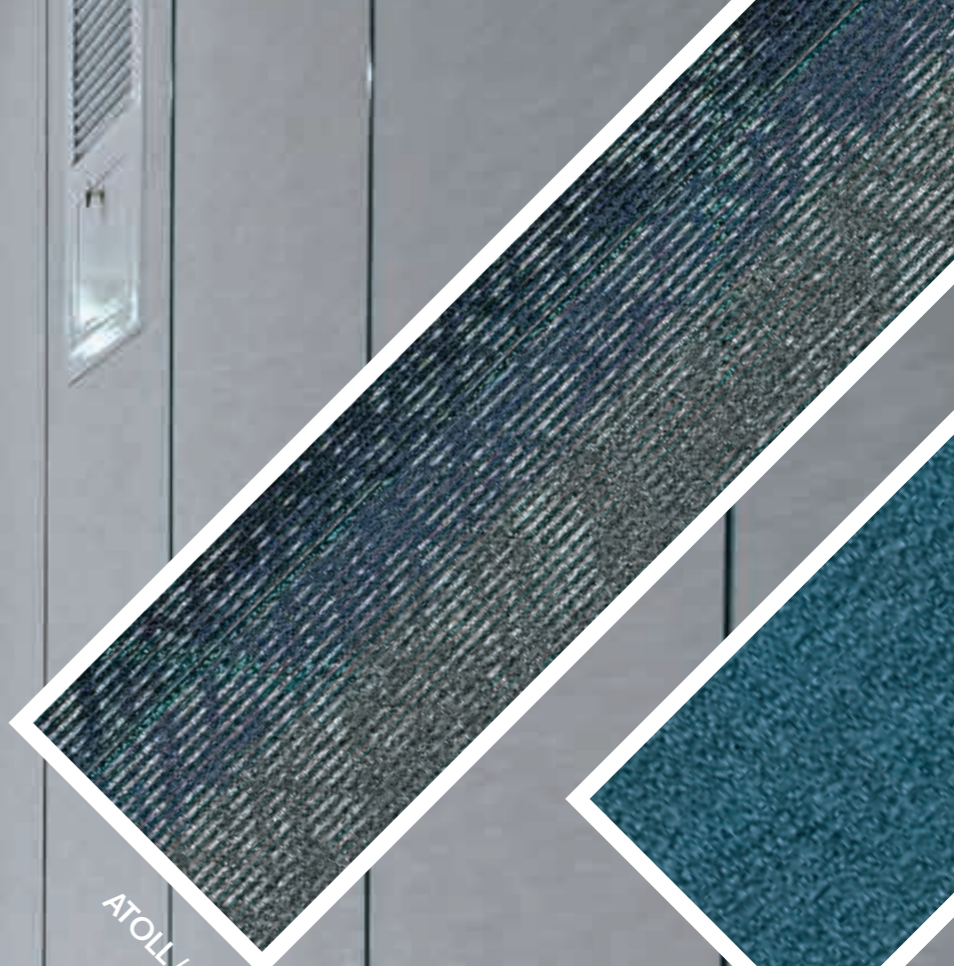


REVITALISE

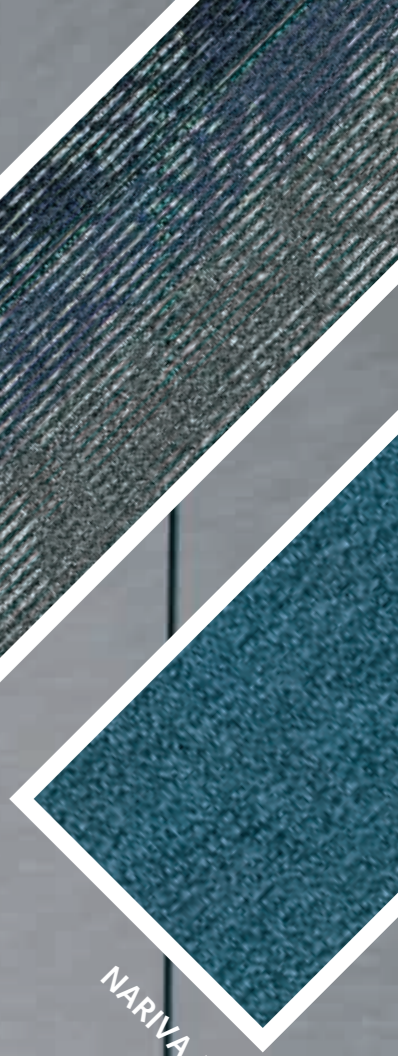
EDGE

Rocky shorelines reflect colors
of lands fusion with water





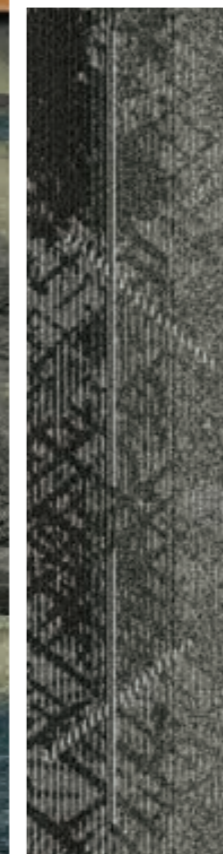
ATOLL HL 05



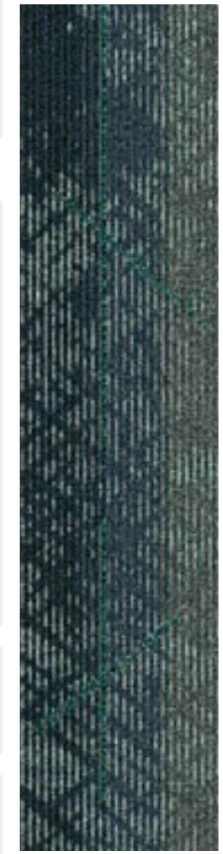
NARIVA FL36



**COLOR INTERACTION
TO COMPLIMENT WORK,
REST & PLAY AREAS**



ROCKY
HL 01



ATOLL
HL 05

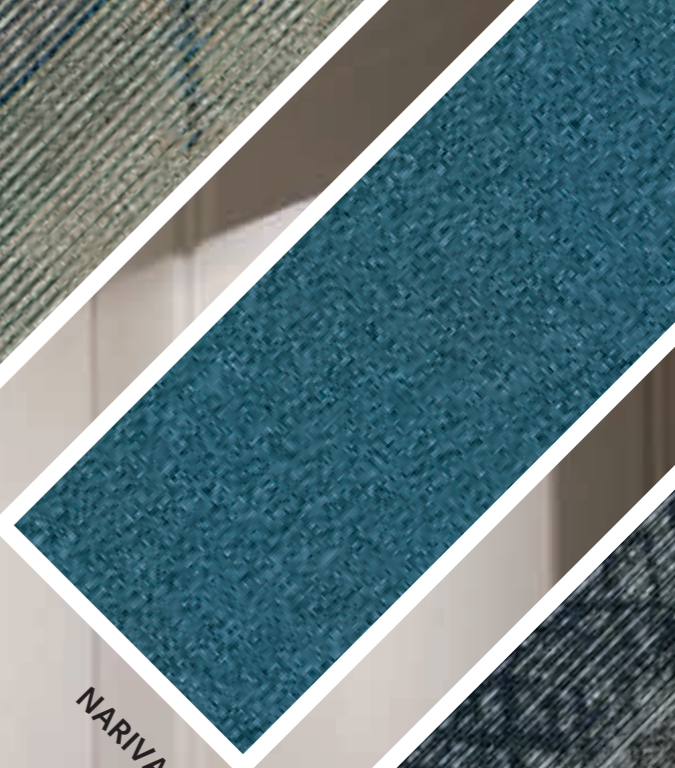


CLIFF-TOP
HL 11

VERSATILE



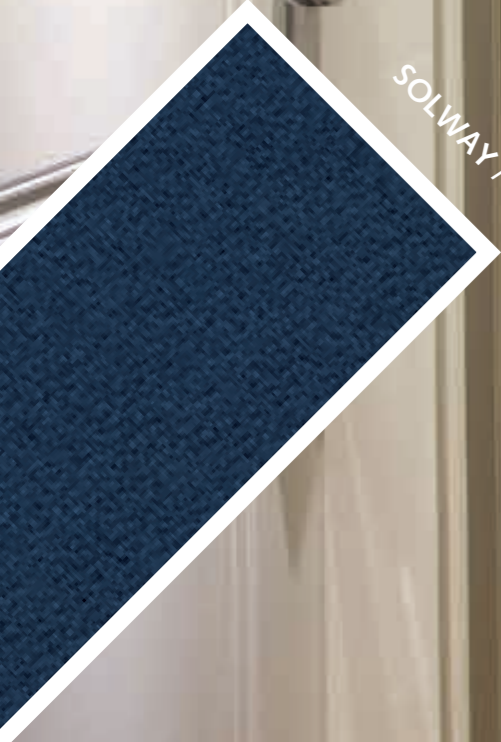
COVE HL 08



NARIVA FL36



FJORD HL 06

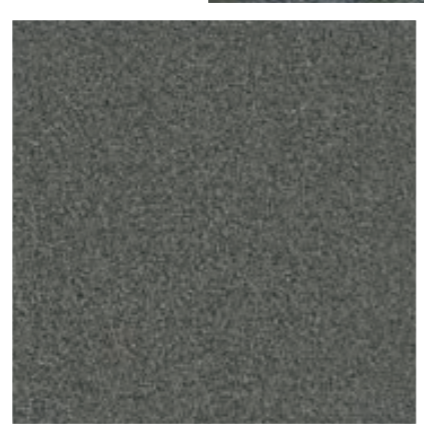


SOLWAY FL31

**LIVEN UP A PRIVATE WORK
SPACE WITH SUBTLE
COORDINATES**



GOLF
HL 07



GOLA
FL 01



PRACTICE



PATHWAYS

A spectrum of color viewed
along coastal pathways

ECOSOFT® BACKING USES RECYCLED PET BOTTLES PROVIDING ENVIRONMENTALLY SUSTAINABLE INTERIORS

INTELLIGENT



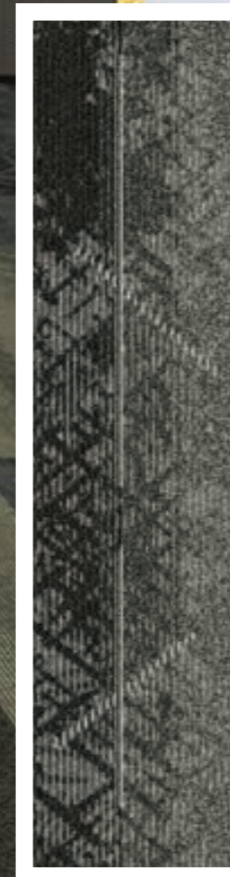
COASTAL PATH
HL 12



FYLDE
FL37

DISTINCTIVE

**TRANSITIONAL GRAPHICS
OF HEADLANDS & FLATLANDS
TO CREATE DYNAMIC SPACES**



ROCKY
HL 01



CLIFF-TOP
HL 11



STORA
FL 28

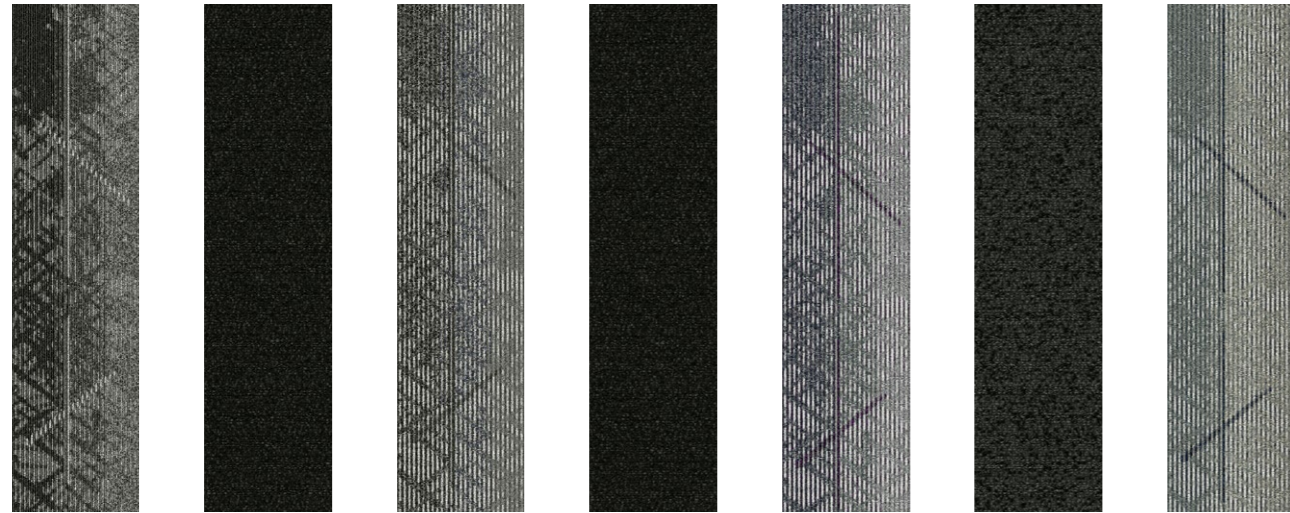


GOLA
FL 01

Headlands

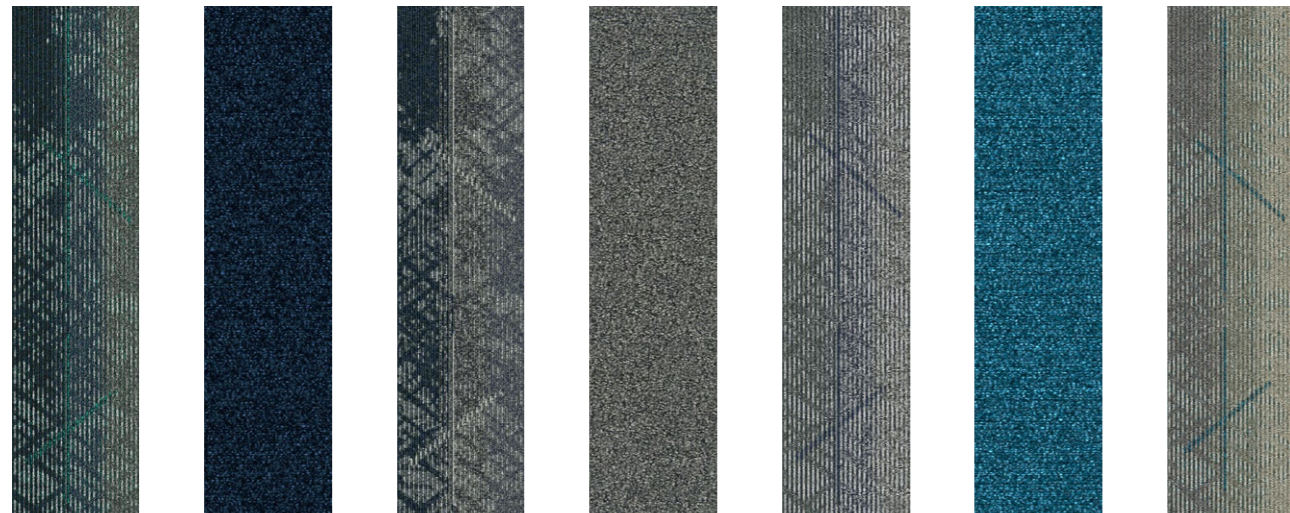
Flatlands

PEAKS



ROCKY HL 01 **YILAN** FL 27 **RIDGE** HL 02 **RIETI** FL 27 **OUTCROP** HL 03 **STORA** FL 28 **PENINSULA** HL 04

EDGE

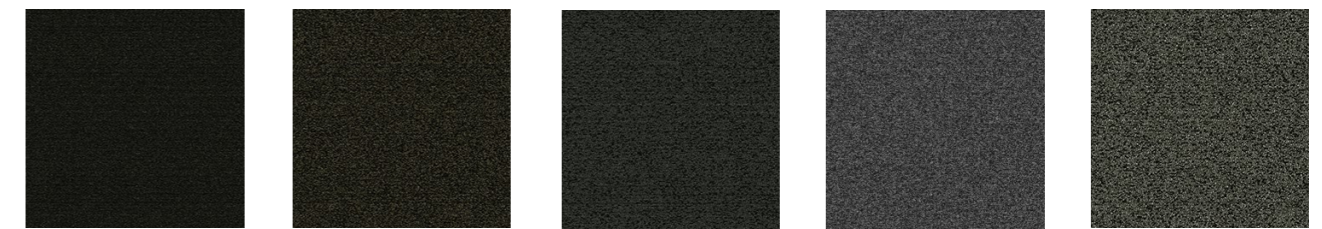


ATOLL HL 05 **SOLWAY** FL 31 **FJORD** HL 06 **GOLA** FL 01 **GULF** HL 07 **NARIVA** FL 36 **COVE** HL 08

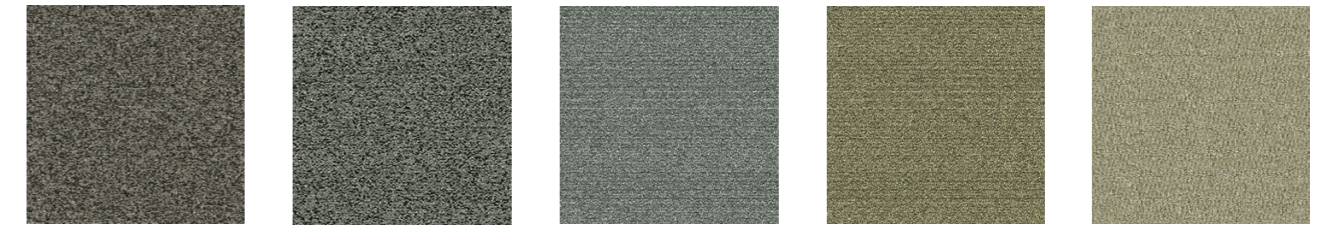
PATHWAYS



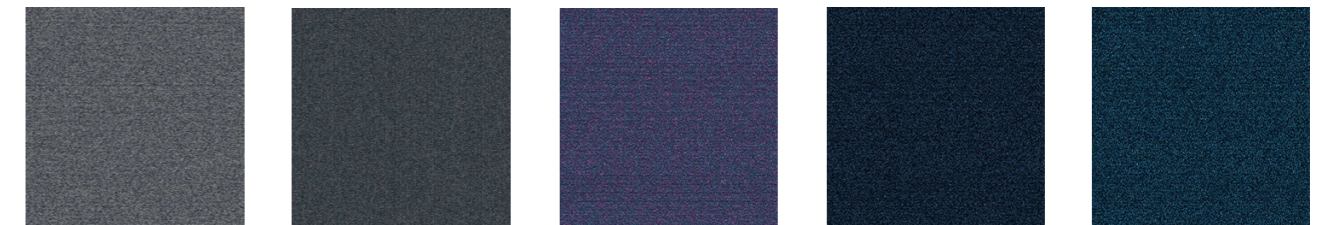
DUNE HL 09 **LANTOTO** FL 11 **SANDBAR** HL 10 **CHESHIRE** FL 26 **CLIFF-TOP** HL 11 **FYLDE** FL 37 **COASTAL PATH** HL 12



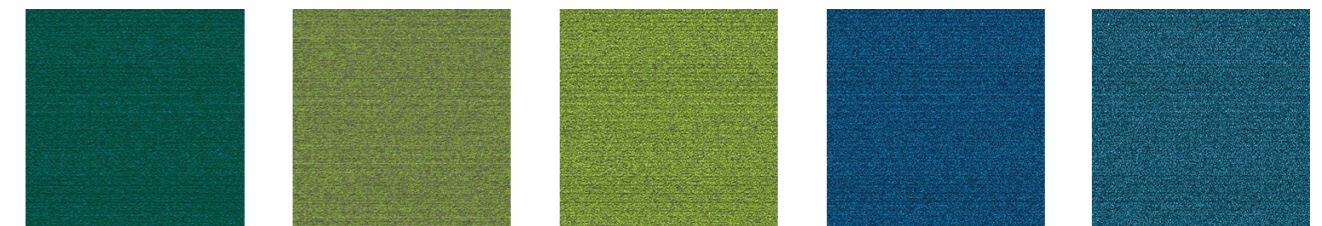
Yilan FL27 **Messara** FL30 **Stora** FL28 **Omo** FL04 **Nurra** FL29



Taza FL08 **Manitoto** FL25 **Rieti** FL24 **Cheshire** FL26 **Karoo** FL18



Gola FL01 **Arusha** FL03 **Llanos** FL35 **Solway** FL31 **Mugan** FL34



Limagne FL33 **Sapo** FL10 **Fylde** FL37 **Taieri** FL32 **Nariva** FL36



Kedu FL22 **Depsang** FL39 **Shiraki** FL38 **Lantoto** FL11

HEADLANDS & FLATLANDS - CARPET TILE SPECIFICATIONS

CONSTRUCTION	Multi Level Texture Tufted	BACKING STRUCTURE	EcoSoft® , Recycled Cushion Backing
PILE FIBER	100% Solution Dyed Nylon	PILE TREATMENT	EcoSquare® , Reinforced Recycled Backing
TUFTING GAUGE	1/12 inch	HEADLANDS TILE SIZE	25 x 100 cm.
PILE HEIGHT	3.0 - 5.5 mm.	FLATLANDS TILE SIZE	50 x 50 cm., 25 x 100 cm.
HEADLANDS CARPET WEIGHT	2,962 gm/sq.m. for EcoSoft®	BACKING OPTIONS AND SIZE	Contact your sales representative for information
FLATLANDS CARPET WEIGHT	4,077 gm/sq.m. for EcoSquare®		
	2,880 gm/sq.m. for EcoSoft®		
	3,995 gm/sq.m. for EcoSquare®		

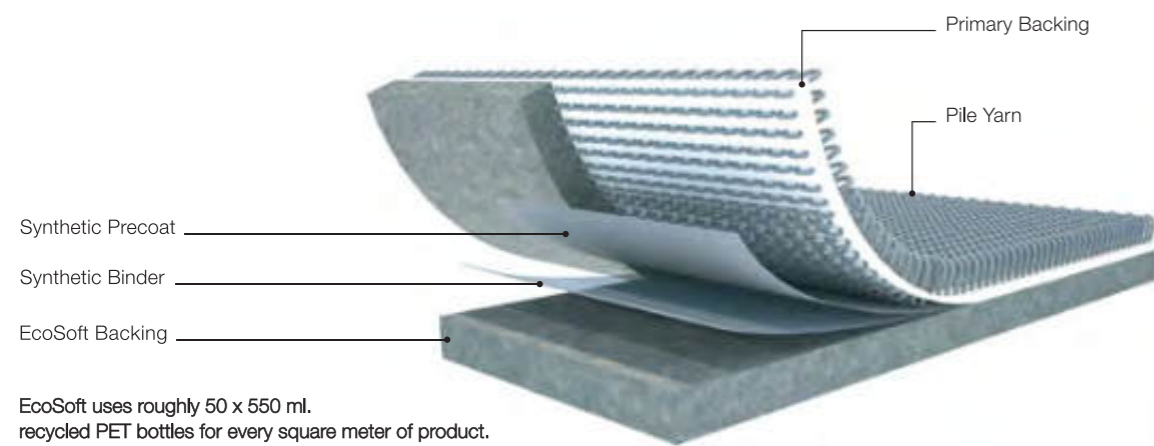
Specifications are subject to normal manufacturing tolerances, and subject to change without prior notice. As in all quality carpets, colors are subject to dye lot variations.

We will RECYCLE OVER 1,000,000,000 discarded PLASTIC BOTTLES by 2025

EcoSoft®

Sustainable Performance and Value

EcoSoft® is made from 80% post-consumer material reengineered from millions of discarded drinking water bottles, plus 5 to 10% post-industrial recycled PET. This environmentally friendly backing not only meets all the stringent performance criteria required for modular carpet, but consistently outperforms conventional PVC and bitumen hard back, as well as urethane cushion back in terms of durability, underfoot comfort, acoustical propensity and indoor air quality.



EcoSoft uses roughly 50 x 550 ml. recycled PET bottles for every square meter of product.



EcoSoft® Outstanding Features

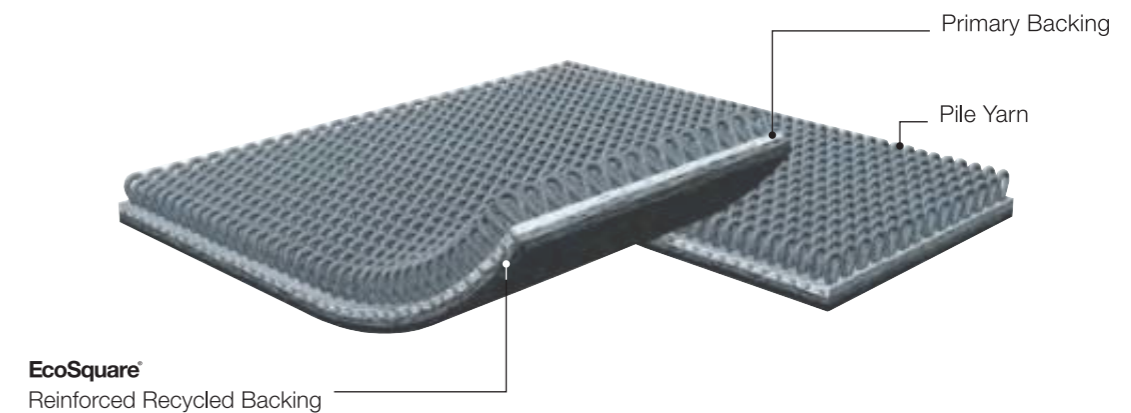
- > 85% recycled content backing
- > 100% recyclable
- > No PVC, Bitumen or Fiberglass content
- > Suitable for installation onto wet slab up to 99% RH
- > Superior Acoustical Propensity - outperforms hardback by 150% to 175% per Green Star IEQ10 internal noise level requirements
- > Excellent Dimensional Stability BS EN 986 less than 0.15%
- > Cushioning reduces wear and tear, fiber crush and user fatigue
- > EcoSoft® backed modular carpet product contributes up to 6 LEED points

In view of the superior properties outlined above, modular carpet with EcoSoft® backing is the ideal choice for Education facilities.

EcoSquare®

Sustainable Performance and Value

EcoSquare® is another step in Carpet Inter's ongoing Sustainability and Reclamation program, repurposing waste material into a recycled high performance modular carpet backing.



EcoSquare® Outstanding Features

- > 63.5% recycled content backing
- > 100% recyclable
- > Meets Greenstar best practice guidelines
- > Free of toxic plasticisers and stabilisers
- > Excellent Dimensional Stability BS EN 986 less than 0.15%
- > EcoSquare® backed modular carpet product contributes up to 5 LEED points



Headquarters

2054 New Petchburi Road
Bangkapi, Huaykwang, Bangkok 10310 Thailand
Tel +66 (0) 2314-5402, Fax +66 (0) 2318-3537
www.carpetsinter.com, info@carpetsinter.com

Please contact your local Carpets Inter representative for samples.