



Carpets Inter®

B
R
E
A
T
H
E



BREATHE

INHALE . . .

. . . EXHALE

On average we humans breathe around 20,000 times every day . . .

That's a lot of Oxygen in, and a lot of CO₂ out

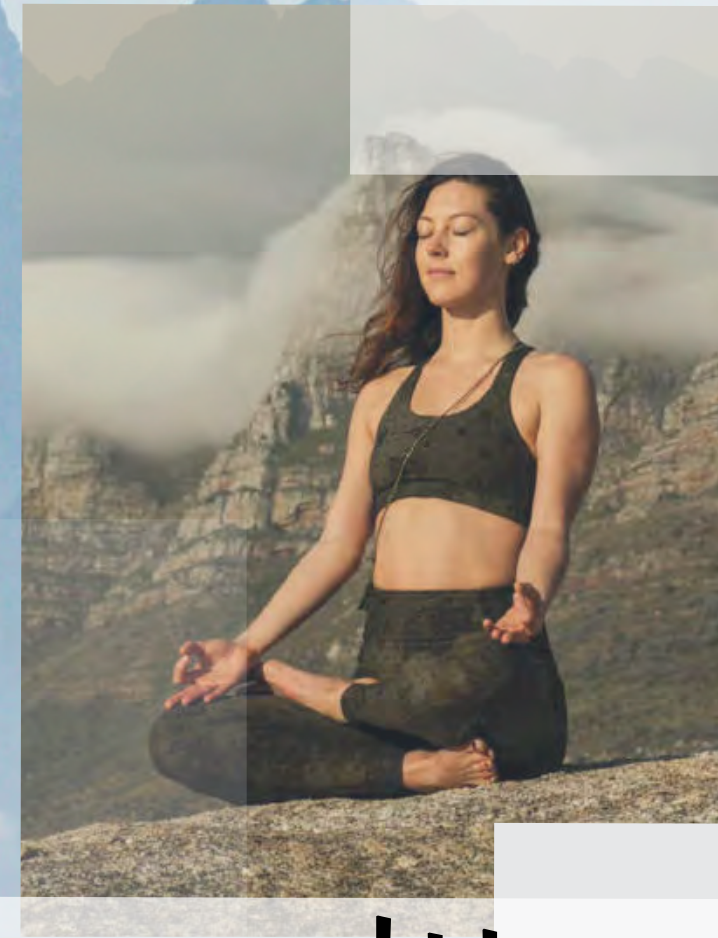
Carpets Inter brings you **Breathe**, a modular carpet tile collection in two designs **Inhale** and **Exhale** that work together as instinctively as breathing...

Manufactured to ensure that we help the world to breathe a little easier every day...

INHALE

Earth's natural eco-system gave us plants for sequestering airborne Carbon Dioxide and provide us with fresh Oxygen to Breathe....

In line with the Paris climate change agreement, our Climate Change mitigation project donates 100% of treated facility sediment to Organic Crop fertilization, generating healthier soil, which in turn sequesters harmful greenhouse gases back into the Earth itself.

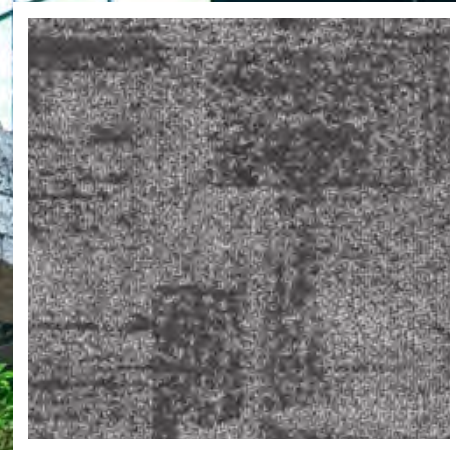


With zero waste to landfill since 2009, we continue to repurpose Manufacturing & Take Back waste into clean energy generation for powering our facility. In addition for cementitious products into Green Building Infrastructure.

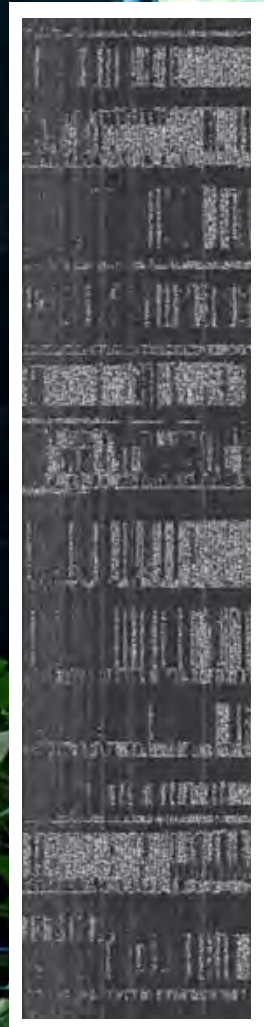
At CI we mitigate CO₂ at source, rather than solely purchasing credits to offset our carbon footprint.

ITS JUST GOOD STEWARDSHIP!

EXHALE



CARBON IN 05



VINYASA EX 05

**REFLECT ON LUXURIOUS
UNDERFOOT COMFORT
WITH NOISE CANCELLING
SOUND ABSORPTION**



SCENT *IN 08*



Brooklyn

FRESH IDEAS

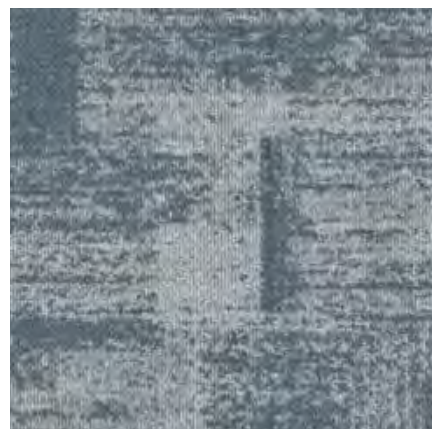


FRESH IN 10



INDOOR AIR QUALITY

**CARPET IS INDEPENDENTLY
PROVEN TO PROVIDE CLEANER
AIR QUALITY WITHIN A ROOM
BY TRAPPING HARMFUL DUST
PARTICLES, AND PREVENTING
AIRBOURNE POLLUTANTS**



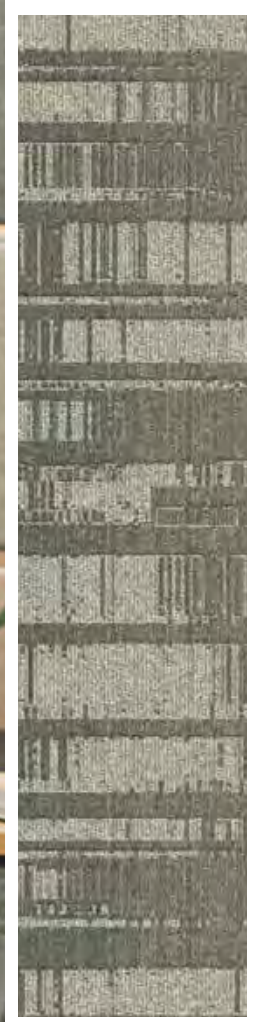
OXYGEN IN 02



INHALE

Mitigating Carbon at source;
Carpets Inter has embedded Carbon into
our finished product for over two decades
by recycling almost 1 billion single use PET
plastic bottles, diverting them away from
landfill sites or entering and harming our
fragile oceans.

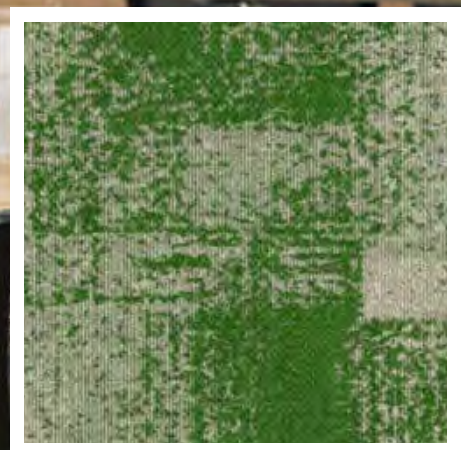




ASANA EX 01



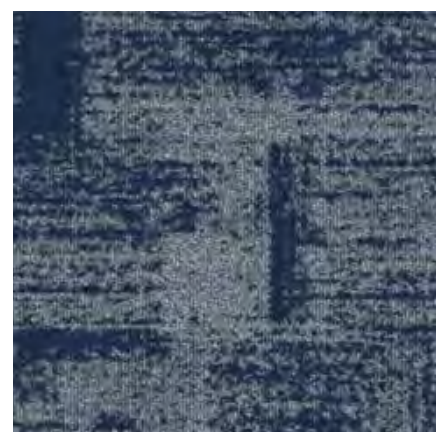
VAPOUR IN 01



SCENT IN 08

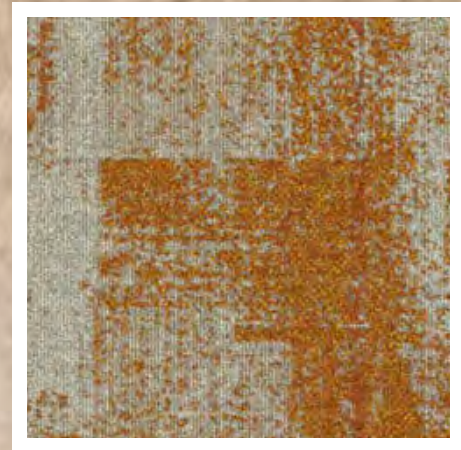
LEARNING ATMOSPHERE

CREATE A SAFE CLEAN
ENVIRONMENT FOR
EDUCATION

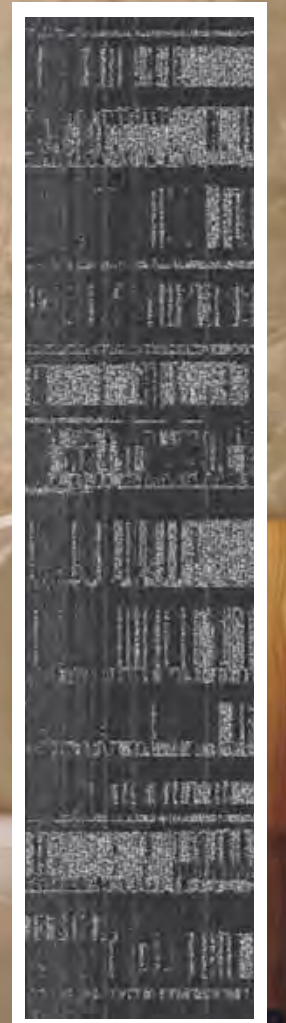


ATMOSPHERE IN 06



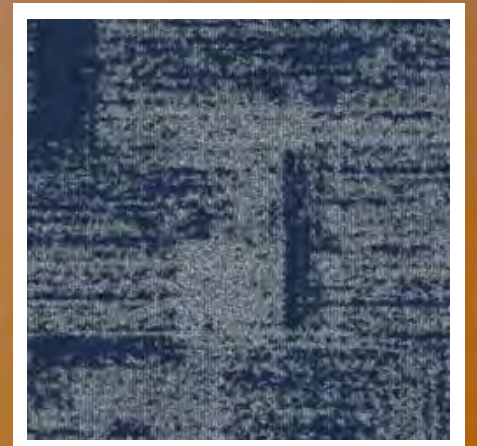


INCENSE IN 07



VINYASA EX 05

BREATHE EASY



ATMOSPHERE *IN 06*



INCENSE *IN 07*

EXHALE





BREEZE IN & OUT FOR COMFORT



INCENSE IN 07

FRESH AIR

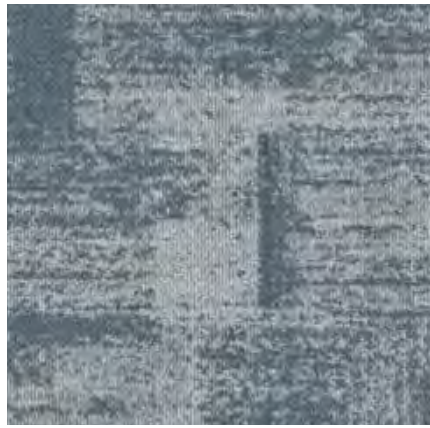


VAPOUR IN 01





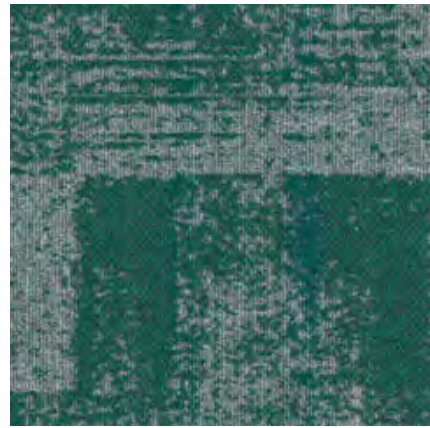
SUSTAINABLE MINDS



OXYGEN *IN 02*



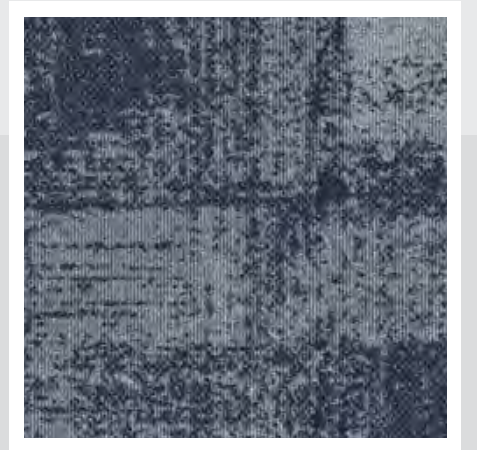
INCENSE *IN 07*



FRAGRANCE *IN 09*



THERMAL BARRIER REDUCES ENERGY USAGE



OZONE IN 04

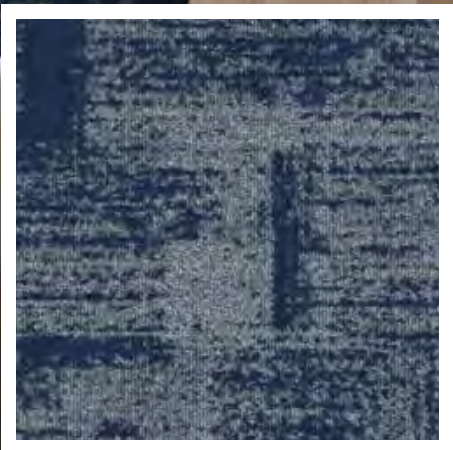


BREATHE a little easier....
DECLARE for Well Building Certification

Declare.



EcoSoft®



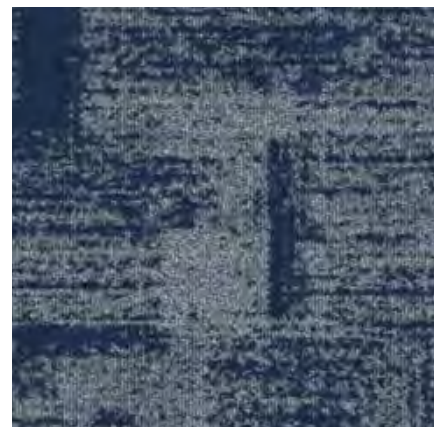
ATMOSPHERE IN 06

***"LIFE IS NOT MEASURED BY
THE NUMBER OF BREATHS
WE TAKE, BUT BY THE
MOMENTS THAT TAKE OUR
BREATH AWAY"***

VICKI CORONA



PARTICLE IN 03



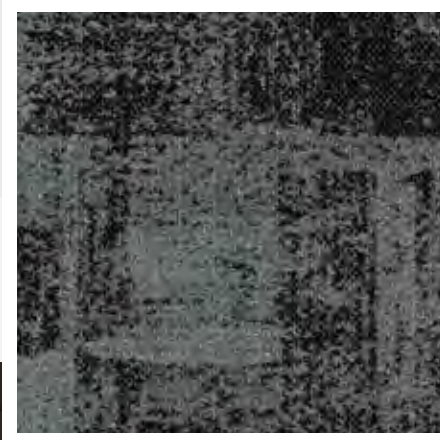
ATMOSPHERE IN 06



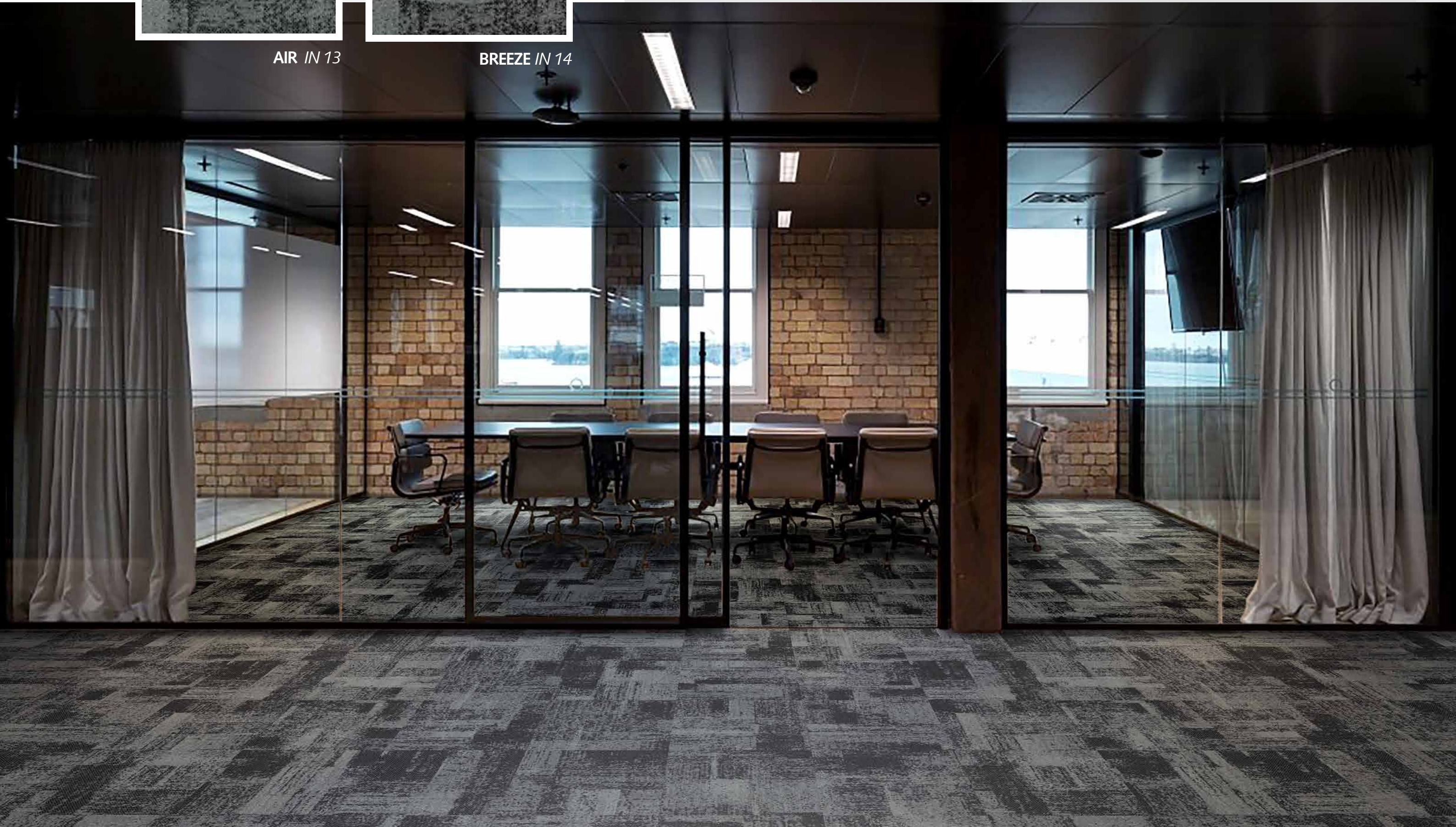
GREEN BUILDINGS



AIR IN 13



BREEZE IN 14

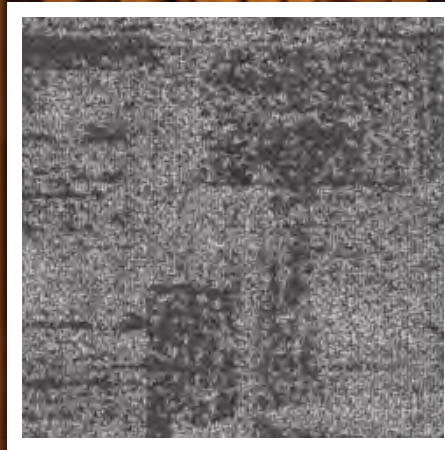


HEALTHY SPACES



VAPOUR IN 01





CARBON IN 05

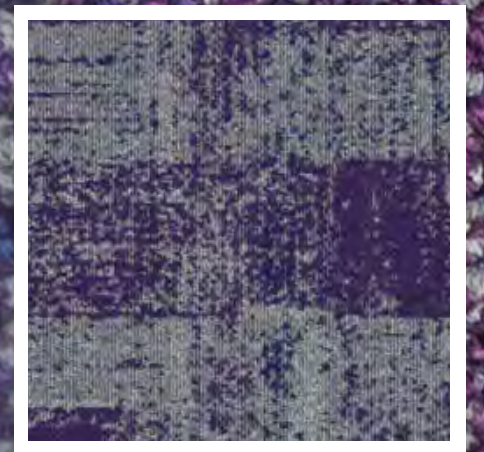
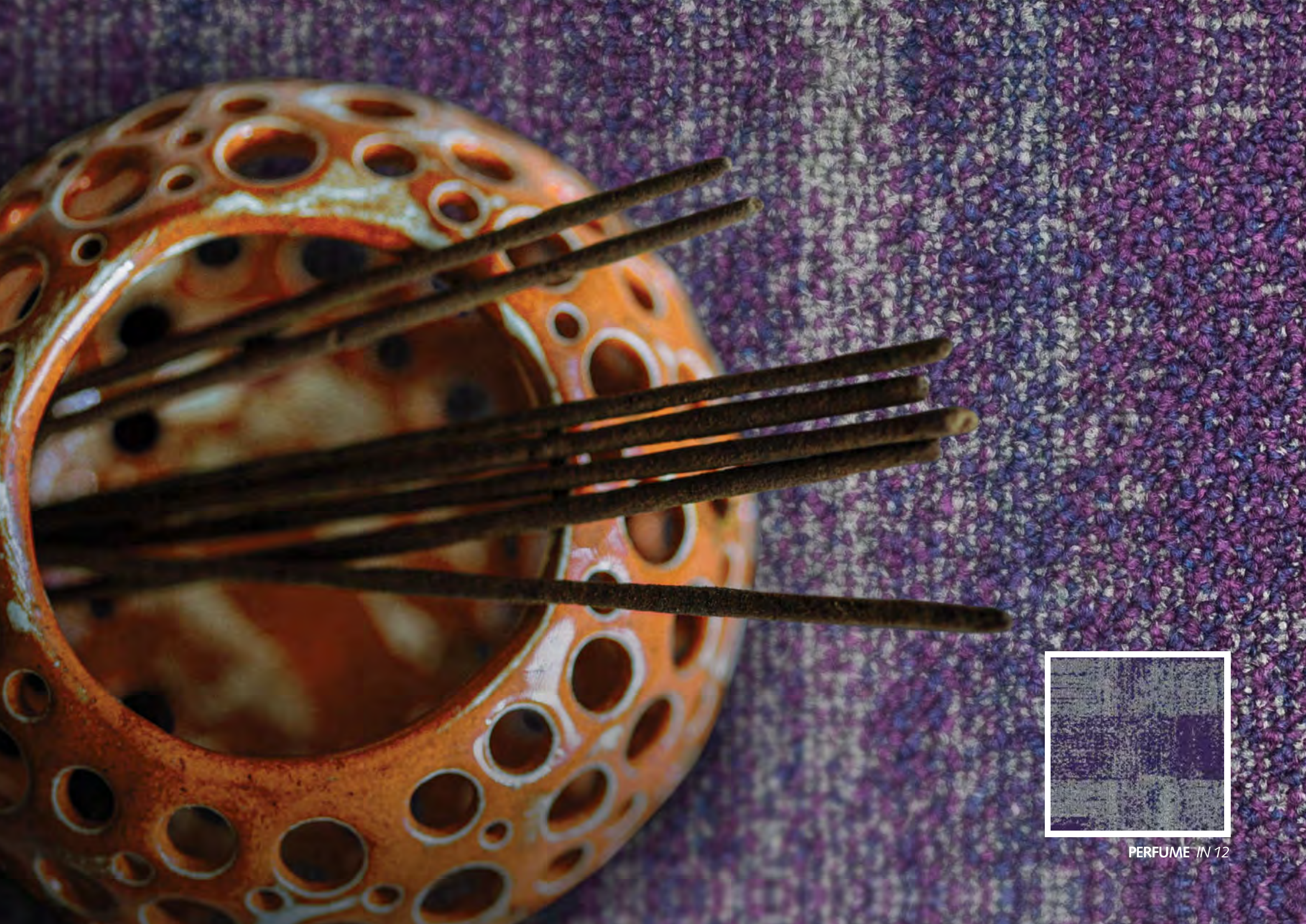


INCENSE IN 07

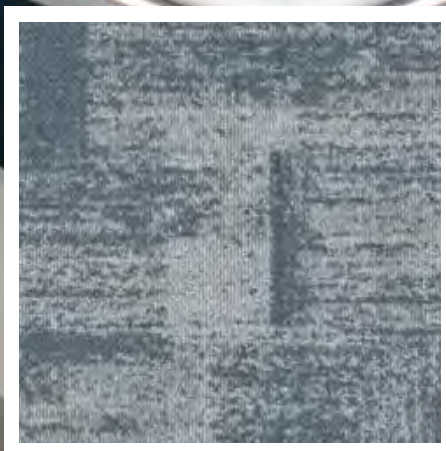


VINYASA EX 05





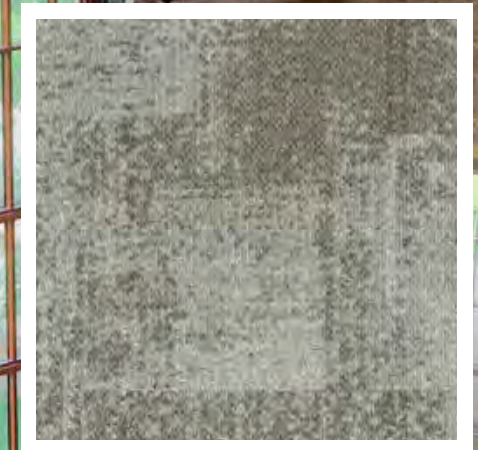
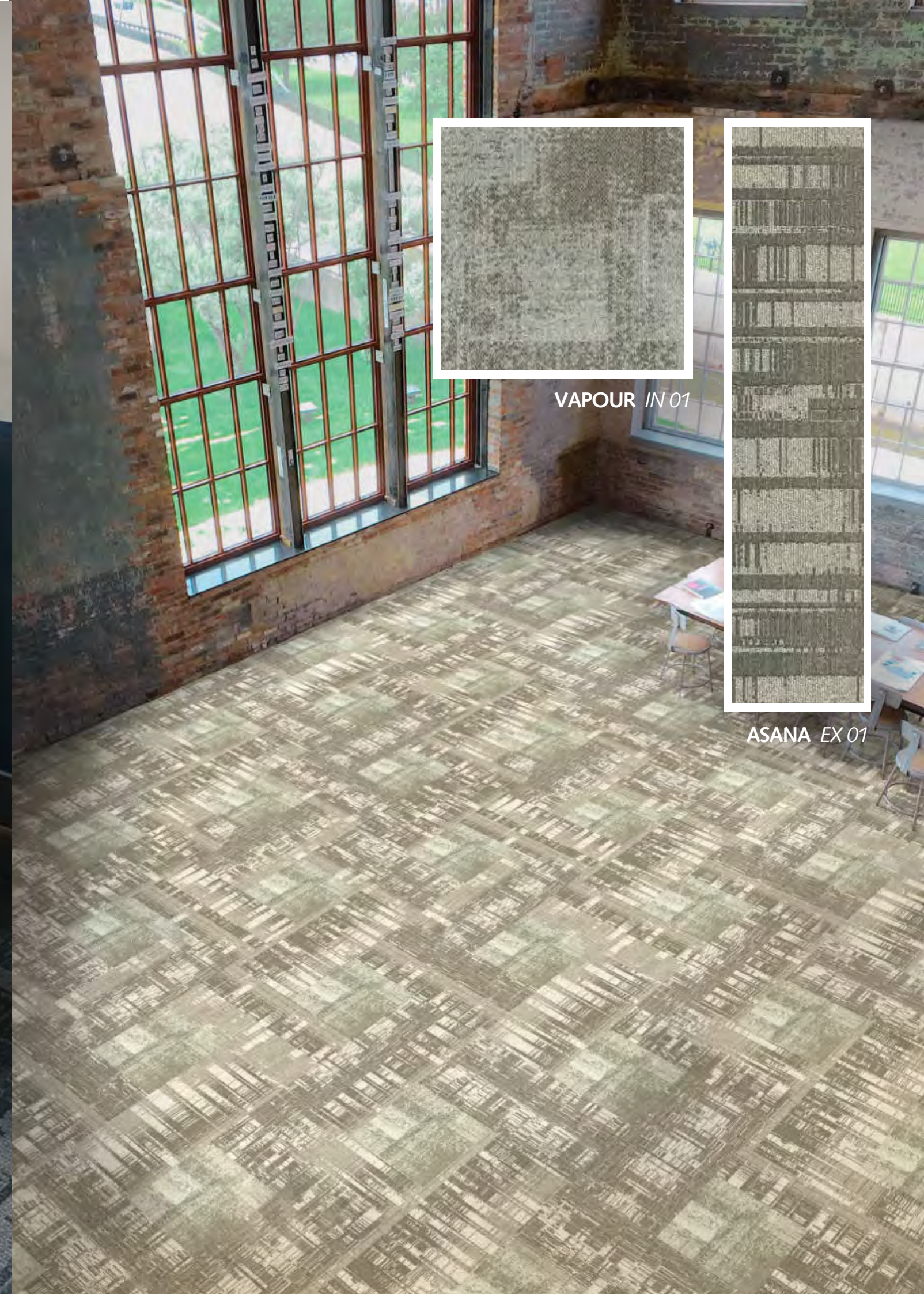
PERFUME IN 12



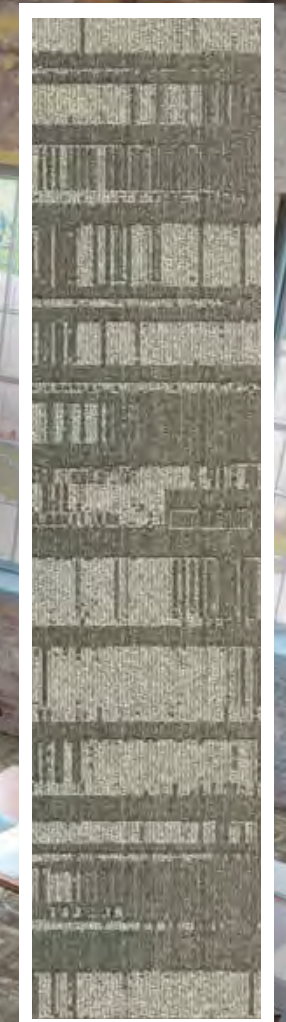
OXYGEN IN 02



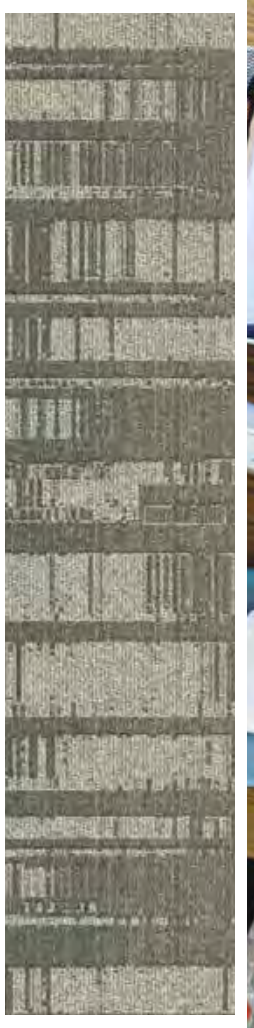
UJJAYI EX 02



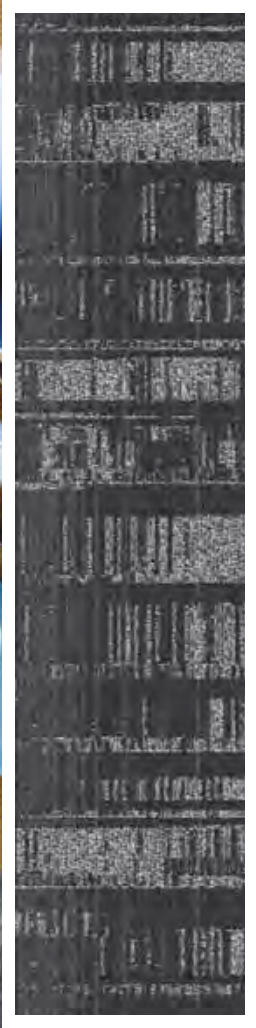
VAPOUR IN 01



ASANA EX 01



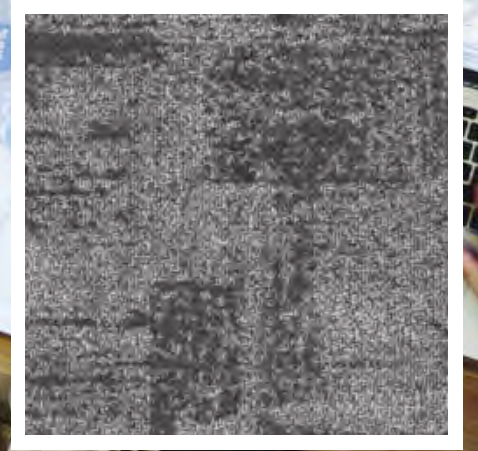
ASANA EX 01



VINYASA EX 05

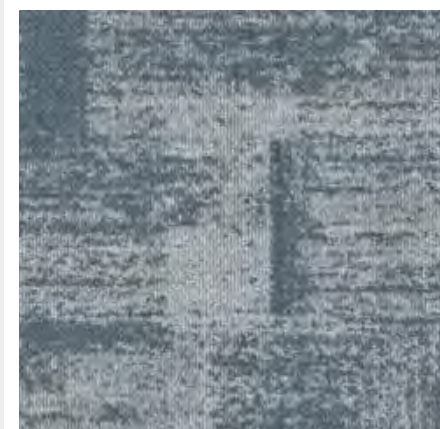


VAPOUR IN 01

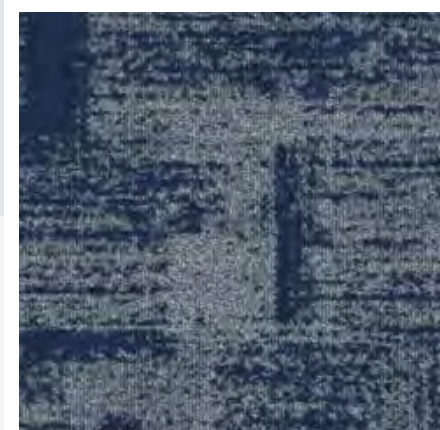


CARBON IN 05

CREATIVE ATMOSPHERE



OXYGEN *IN 02*



ATMOSPHERE *IN 06*



A close-up photograph of two hands, palms up, holding a small, vibrant yellow flower with a dark center. The hands are positioned in the center of the frame, with the fingers slightly spread. The background is blurred, showing indistinct shapes and colors, suggesting an outdoor setting. The lighting is soft, highlighting the texture of the skin and the petals of the flower.

**PROTECTING
THE PLANET
AT SOURCE**

THE PATH TO ONE BILLION



EcoSoft® has recycled almost ONE billion PET plastic bottles from polluting our planet...

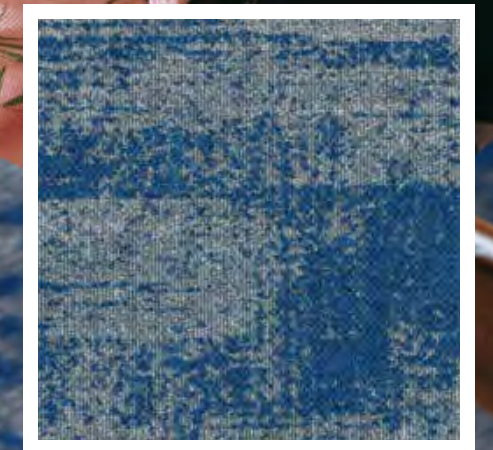
Be a part of this mission!

EcoSoft® uses 80% post-consumer discarded PET plastic bottles, plus 5% post-industrial recycled PET. This NSF140 certified backing, achieves DECLARE label **RED LIST FREE** for WELL certified Green Building standards.

EcoSoft® out performs all hard and polyurethane cushion back modular tile in terms of comfort, durability, noise reduction, thermal barrier, hygiene and indoor air quality.

Breathe Easy...

Declare.



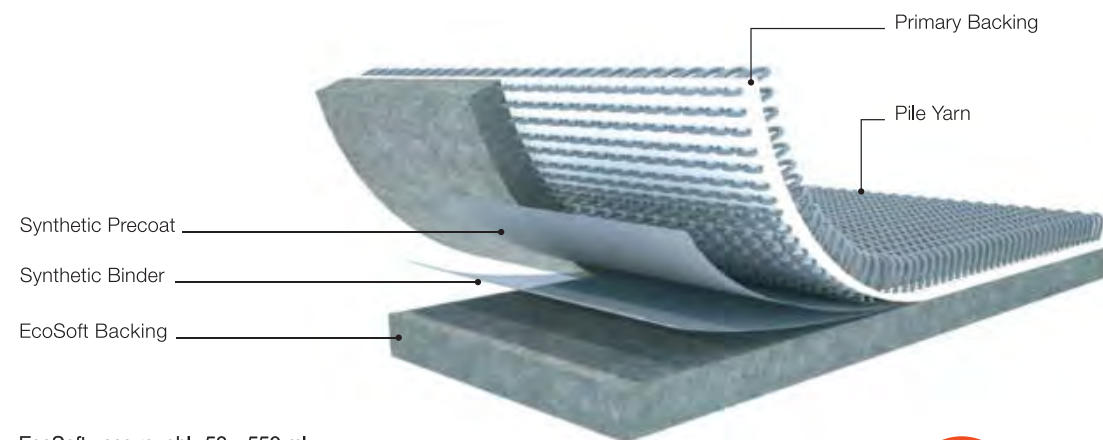
AROMA IN 11

We will RECYCLE OVER 1,000,000,000 discarded PLASTIC BOTTLES by 2025

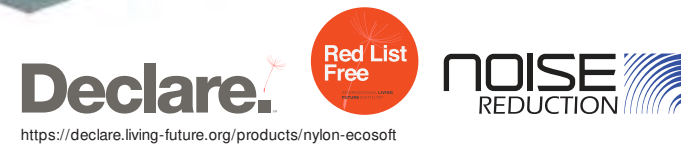
EcoSoft

Sustainable Performance and Value

EcoSoft® is made from 80% post-consumer material reengineered from millions of discarded drinking water bottles, plus 5 to 10% post-industrial recycled PET. This environmentally friendly backing not only meets all the stringent performance criteria required for modular carpet, but consistently out performs conventional PVC and bitumen hard back, as well as urethane cushion back in terms of durability, underfoot comfort, acoustical propensity and indoor air quality.



EcoSoft uses roughly 50 x 550 ml. recycled PET bottles for every square meter of product.



EcoSoft® Outstanding Features

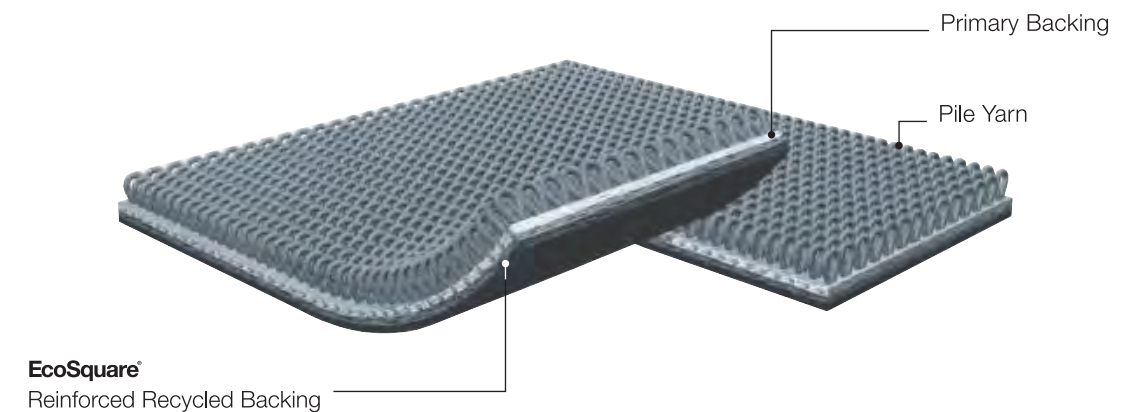
- > 85% recycled content backing
- > 100% recyclable
- > Declare products that are “LBC Red List Free”, have been approved as compliance pathways for the International WELL Building Standard.
- > No PVC, Bitumen or Fiberglass content
- > Suitable for installation onto wet slab up to 99% RH
- > Superior Acoustical Propensity - outperforms hardback by 150% to 175% per Green Star IEQ10 internal noise level requirements
- > Excellent Dimensional Stability BS EN 986 less than 0.15%
- > Cushioning reduces wear and tear, fiber crush and user fatigue
- > EcoSoft® backed modular carpet product contributes up to 6 LEED points

In view of the superior properties outlined above, modular carpet with EcoSoft® backing is the ideal choice for Education facilities.

EcoSquare

Sustainable Performance and Value

EcoSquare® is another step in Carpet Inter’s ongoing Sustainability and Reclamation program, repurposing waste material into a recycled high performance modular carpet backing.



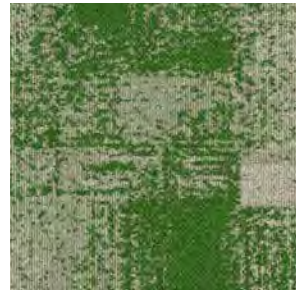
EcoSquare® Outstanding Features

- > 63.5% recycled content backing
- > 100% recyclable
- > Meets Greenstar best practice guidelines
- > Free of toxic plasticisers and stabilisers
- > Excellent Dimensional Stability BS EN 986 less than 0.15%
- > EcoSquare® backed modular carpet product contributes up to 5 LEED points

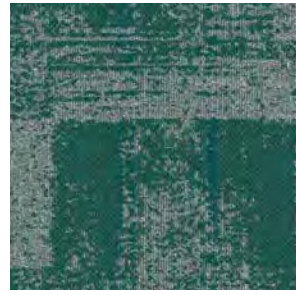
Modular Carpet

BREATHE | INHALE

Carpets Inter®



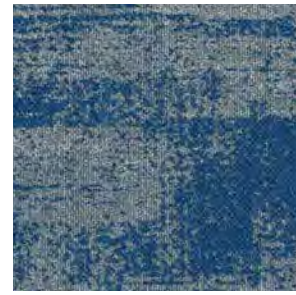
SCENT IN 08



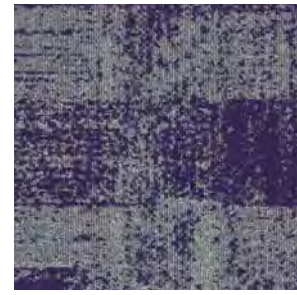
FRAGRANCE IN 09



FRESH IN 10



AROMA IN 11



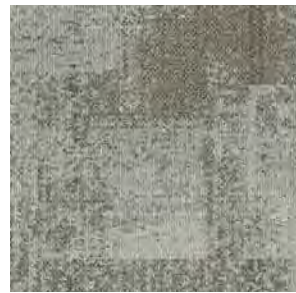
PERFUME IN 12



AIR IN 13



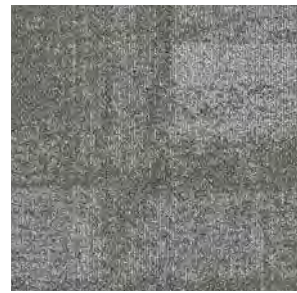
BREEZE IN 14



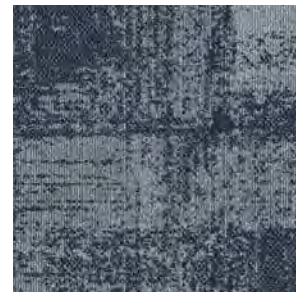
VAPOUR IN 01



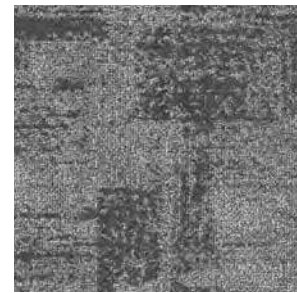
OXYGEN IN 02



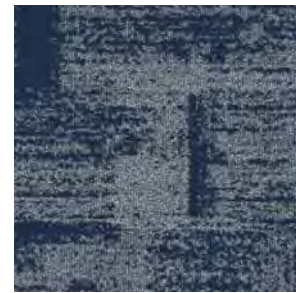
PARTICLE IN 03



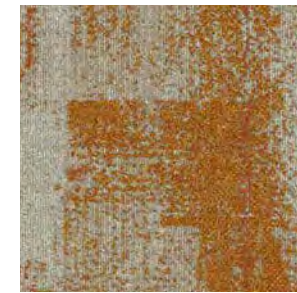
OZONE IN 04



CARBON IN 05



ATMOSPHERE IN 06



INCENSE IN 07

BREATHE | EXHALE



ASANA EX 01



UJJAYI EX 02



HATHA EX 03



PRANAYAMA EX 04



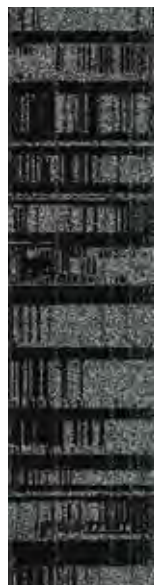
VINYASA EX 05



SITALI EX 06



NADI EX 13



SODHANA EX 14

CARPET TILE SPECIFICATIONS

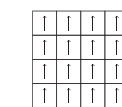
CONSTRUCTION	Multi Level Texture Tufted
PILE FIBER	100% Solution Dyed Nylon
TUFTING GAUGE	1/12 inch
PILE HEIGHT	3.0 - 5.5 mm.
TOTAL CARPET WEIGHT	3,030 gm/sq.m. for EcoSoft 4,145 gm/sq.m. for EcoSquare
BACKING STRUCTURE	EcoSoft Recycled Cushion Backing EcoSquare Reinforced Recycled Backing
PILE TREATMENT	Stain and Soil Protection
TILE SIZE	50 x 50 cm., 25 x 100 cm.
BACKING OPTIONS AND SIZE	Contact your sales consultant for information

CERTIFICATION

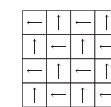


INSTALLATION METHOD

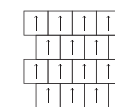
INHALE



Monolithic



Checkerboard



Horizontal Brick

EXHALE

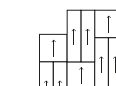
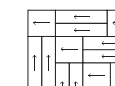
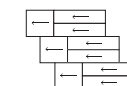
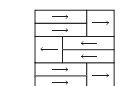


Random Vertical Brick



Herringbone

INHALE WITH EXHALE



Specifications are subject to normal manufacturing tolerances, and subject to change without prior notice. As in all quality carpets, colors are subject to dye lot variations.



Headquarters

2054 New Petchburi Road
Bangkapi, Huaykwang, Bangkok 10310 Thailand
Tel +66 (0) 2314-5402, Fax +66 (0) 2318-3537
www.carpetsinter.com, info@carpetsinter.com

Please contact your local Carpets Inter representative for samples.