

Flatlands

CARPET TILE SPECIFICATIONS

CONSTRUCTION
PILE FIBER
TUFTING GAUGE
PILE HEIGHT
TOTAL CARPET WEIGHT
BACKING STRUCTURE
PILE TREATMENT
STANDARD MODULE SIZE

EcoSquare®

Hi-Low Loop Texture Tufted
100% Solution Dyed Nylon
1/10 inch
3.0 - 4.0 mm.
3,795 gram/sq.m.

 **EcoSquare®**
Reinforced Recycled Hard Back
Stain and Soil Protection
50 x 50 cm., 25x100 cm.

EcoSoft®



Hi-Low Loop Texture Tufted
100% Solution Dyed Nylon
1/10 inch
3.0 - 4.0 mm.
2,680 gram/sq.m.

 **EcoSoft®**
Recycled PET Cushion Back
Stain and Soil Protection
50 x 50 cm., 25x100 cm.

PERFORMANCE

END USE CLASSIFICATION
CASTER CHAIR INDEX
DIMENSIONAL STABILITY
ELECTROSTATIC PROPENSITY
COLORFASTNESS TO LIGHT
INDOOR AIR QUALITY

BS EN 1307 Class 33 – Heavy Commercial
BS EN 985 ≥ 2,4
BS EN 986 < 0,15%
AATCC 134 < 3 KV
ISO 105 B02 Min L6
GLP 1022

BS EN 1307 Class 33 – Heavy Commercial
BS EN 985 ≥ 2,4
BS EN 986 < 0,15%
AATCC 134 < 3 KV
ISO 105 B02 Min L6
GLP 7543

FLAMMABILITY

HOT METAL NUT
RADIANT PANEL TEST
SMOKE DENSITY
SURFACE FLAMMABILITY
FIRE CLASSIFICATION

BS 4790 Low Radius
ASTM E648 Class 1
ASTM E662 < 450
ASTM D 2859 Passes
BS EN 13501 Class C_i-s₁

BS 4790 Low Radius
ASTM E648 Class 1
ASTM E662 < 450
ASTM D 2859 Passes
BS EN 13501 Class B_i-s₁

SOUND ABSORPTION

NOISE REDUCTION COEFFICIENT

BS EN ISO 354 NRC 0,15 or higher

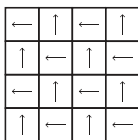
BS EN ISO 354 NRC 0,30 or higher



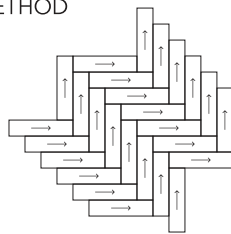
CERTIFICATION



INSTALLATION METHOD



Checkerboard



Herringbone

Specifications are subject to normal manufacturing tolerances, and subject to change without prior notice.
As in all quality carpets, colors are subject to dye lot variations.

Visibility of Carpet Tile Seams in Solid or Near-Solid Tiles - Disclaimer

It is expected that the seams of solid and near-solid carpet tiles will be visible. This is not considered or accepted as a product defect because it is due to the inherent characteristic of a distinct object (the tile in this case) in a solid color. It is what you see in any flooring material that is modular such as wood planks and ceramic tiles.
We recommend a quarter-tum installation for solid color square tiles and a random vertical brick installation for plank tiles. These installations create a subtle texture on the floor by utilizing the visibility of the seams. If you prefer a carpet tile that masks most seams select a product that has a multicolor pattern or texture that can minimize the visibility of tile seams in most applications.

Headquarters

2054 New Petchburi Road
Bangkapi, Huaykwang, Bangkok 10310 Thailand
Tel +66 (0) 2314-5402, Fax +66 (0) 2318-3537
www.carpetsinter.com, info@carpetsinter.com

