

A low-angle, upward-looking photograph of a modern building's interior or exterior structure. The image features a complex network of dark, metallic steel beams that intersect at various angles, creating a strong geometric pattern. Large glass panels are visible, reflecting the sky and the surrounding structure. The overall color palette is dominated by cool blues and greys, with some highlights from the sky. The perspective draws the viewer's eye towards the top of the frame, where the beams converge.

# Annex

Carpets Inter<sup>®</sup>





## Annex

"Inspired by the interconnecting structures that make up the awe inspiring skyline of any modern city, Annex captures the reflectivity of the architectural forms and the cities bright lights which radiate across the urban landscape...

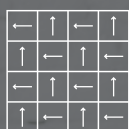
With the soft interaction of tonal color and contrast of bright highlights, Annex invokes a very natural feeling within any interior space."

*Designed and engineered for performance  
by the CI Design and Product Development team.*



With the soft interaction of tonal color and contrast of bright highlights, Annex invokes a very natural feeling within any interior space.

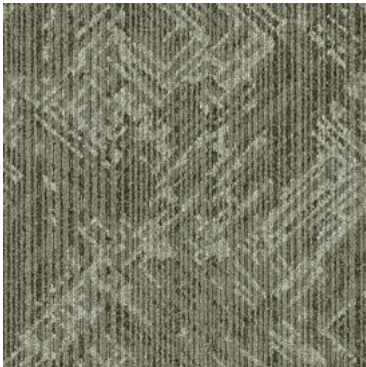
Tile Size 50 x 50 cm.



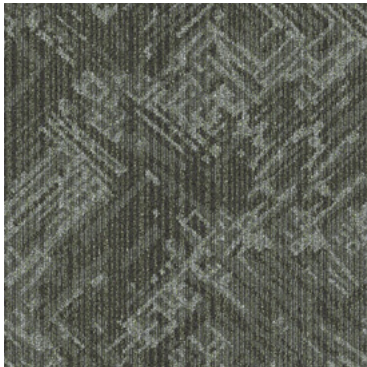
Checkerboard



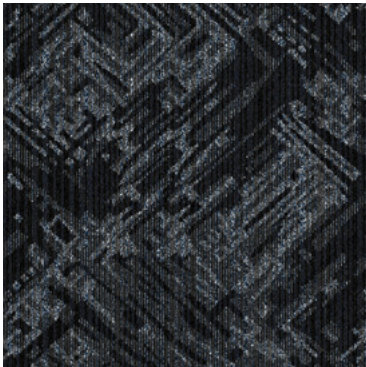
Tile Size 50 x 50 cm.



Perspective  
NX 01



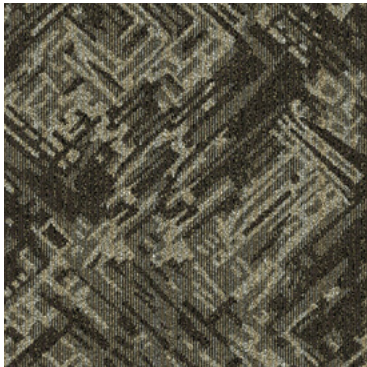
Elevation  
NX 02



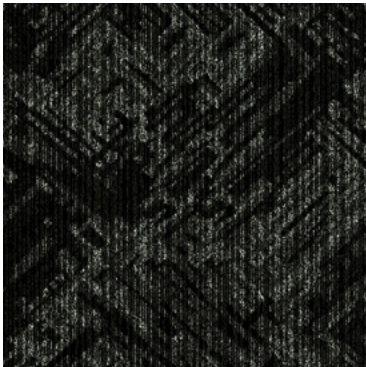
Dimension  
NX 03



Facade  
NX 04



Aspect  
NX 05



Reflection  
NX 06

CARPET TILE SPECIFICATIONS

CONSTRUCTION	Multi Level Texture Tufted
PILE FIBER	100% Solution Dyed Nylon
TUFTING GAUGE	1/12 inch
PILE HEIGHT	3.0 - 5.5 mm.
TOTAL CARPET WEIGHT	4,111 gm/sq.m. <b>EcoSquare®</b>

BACKING STRUCTURE	<b>EcoSquare®</b> , Reinforced Recycled Backing
PILE TREATMENT	Stain and Soil Protection
TILE SIZE	50 x 50 cm.
BACKING OPTIONS AND WIDTH	Available, contact our sales representative for information

Specifications are subject to normal manufacturing tolerances, and subject to change without prior notice.  
As in all quality carpets, colors are subject to dye lot variations.

